



*PA Public School Employees' Retirement System
Investment Performance Analysis*

Final

December 31, 2012

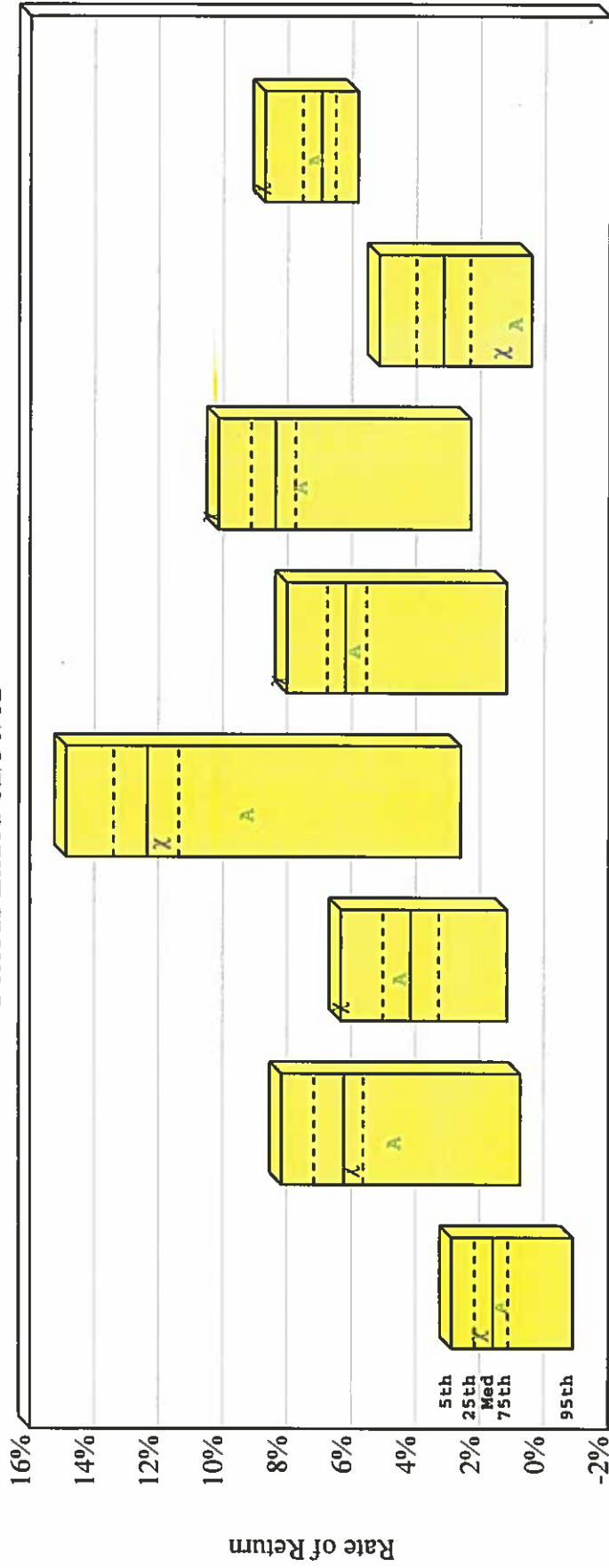


PA Public School Employees' Retirement Sys
 Fund Return Table
 Quarter Ended 12/31/12

Manager	1 Quarter	2 Quarters	3 Quarters	1 Year	3 Years	5 Years	Since 12/31/02	Inception Date	Inception Return
Total Public Market Composite									
Gross of Fee Return	1.48	7.00	4.97	11.37	9.31	1.93	8.49	3/31/92	8.32
Net of Fee Return	1.42	6.85	4.73	11.05	8.96	1.63	8.24	3/31/98	5.67
Blended Policy (Pub Mkt)	1.13	5.72	4.08	9.79	6.93	0.64	7.28	3/31/98	4.81
Total Private Market Composite									
Net of Fee Return	2.56	3.59	8.46	12.00	11.59	-0.70	10.98	3/31/81	8.40
Blended Policy (Priv Mkt)	1.88	2.78	5.55	8.36	9.39	2.81	6.72		
PSERS Total Fund									
Gross of Fee Return	1.91	5.95	6.27	11.83	10.31	1.24	8.75	6/30/82	10.30
Net of Fee Return	1.82	5.74	5.95	11.39	9.90	0.90	8.45	6/30/97	6.65
Blended Policy (TF)	1.40	4.73	4.54	9.31	7.65	0.96	7.19		

*The PSERS Total Public Markets Composite and PSERS Total Fund incorporate the levered returns for the PSERS Gold Fund and PSERS U.S. Long Treasuries Fund.

PA Public School Employees' Retirement Sys Performance Comparison Total Returns of Total Fund Public Sponsors Periods Ended 12/31/12



	1 Quarter	2 Quarters	3 Quarters	1 Year	2 Years	3 Years	5 Years	10 Years
X PSERS Total Fund	1.91 (35)	5.95 (63)	6.27 (5)	11.83 (61)	8.18 (4)	10.31 (4)	1.24 (90)	8.75 (4)
A Policy Index	1.40 (58)	4.73 (88)	4.54 (35)	9.31 (91)	6.01 (57)	7.65 (78)	0.96 (92)	7.19 (35)
Median	1.59	6.24	4.16	12.35	6.20	8.37	3.16	6.96
Number of Funds	95	95	95	95	95	94	90	65



PA Public School Employees' Retirement Sys
Fund Return Table
Quarter Ended 12/31/12

Manager	1 Quarter	2 Quarters	3 Quarters	1 Year	3 Years	5 Years	Since 12/31/02	Inception Date	Inception Return
Total Equity Composite									
Net of Fee Return	3.24	10.52	4.33	17.21	8.45	0.59	8.84	6/30/97	6.09
MSCI AC World IMI Index (N)	2.99	10.04	3.79	16.38	7.02	-0.73	8.59	6/30/97	4.65
MSCI ACWI with USA Gross IMI (N)	3.09	10.22	4.04	16.75	7.31	-0.45	8.90		
Blended Policy (Total Eq)	3.09	10.22	4.04	16.75	7.16	-0.02	8.42	6/30/97	5.23
US Core Plus FI Composite									
Net of Fee Return	1.07	3.72	6.82	8.06	9.20	7.12	6.08	6/30/87	7.85
Barclays Universal	0.58	2.59	4.64	5.53	6.69	6.19	5.59		
Barclays Aggregate	0.21	1.80	3.90	4.22					
Blended Policy (US Core+FI)	0.21	1.80	3.90	4.22	6.13	5.86	5.43		
Non-U.S. Developed Mkts. FI Composite									
Net of Fee Return	0.94	5.53	5.18	7.16	6.51	6.94	6.94	6/30/97	6.35
Barclays Multiverse Index	-0.29	3.08	3.71	4.84	5.41	5.60	6.18		
Barclays GlobalAgg GDPWeighted	0.61	5.10	4.04	6.69					
Blended Policy (Active Global)	0.61	5.10	4.04	6.69	5.67	5.75	6.26		
Emerging Markets FI Composite									
Net of Fee Return	3.42	9.58	8.72	16.81				3/31/10	9.51
JP Morgan GBI EM Global Diversif	4.14	9.14	7.82	16.76				3/31/10	8.72
Barclays Emerging Mkt 10% Countr	4.20	9.39	8.02	16.01					
Blended Policy (EM FI)	4.20	9.39	8.02	16.01				3/31/10	8.57
Global Fixed Income Composite									
Net of Fee Return	1.62	5.36						6/30/12	5.36
Blended Policy (Global FI)	1.26	4.09						6/30/12	4.09
U.S. Long Treasuries Composite									
Net of Fee Return	-0.68	0.51						6/30/12	0.51
Barclays Long Treasury	-0.77	-0.57						6/30/12	-0.57

*Please note the PSEERS U.S. Long Treasuries Fund has a 4Q2012 levered return of (11.67) and an unlevered return of (0.68). All respective composites are incorporating the levered return.



PA Public School Employees' Retirement Sys
Fund Return Table
Quarter Ended 12/31/12

Manager	1 Quarter	2 Quarters	3 Quarters	1 Year	3 Years	5 Years	Since 12/31/02	Inception Date	Inception Return
High Yield Fixed Income Composite									
Net of Fee Return	2.67	9.12	10.95	17.57	11.48	8.11	9.96	9/30/99	7.97
Barclays High Yield	3.29	7.97	9.95	15.81	11.86	10.33	10.62	9/30/99	7.86
CS High Yield Index	3.15	7.55	9.23	14.72	11.44	9.52	10.24	9/30/99	8.08
Blended Policy (HY & Opp)	3.29	7.97	9.95	15.81	11.86	10.29	10.63	9/30/99	8.36
Total US FI X TIPS Composite									
Net of Fee Return	1.97	6.75	9.17	13.30	10.52	8.40	7.16	6/30/97	7.28
TIPS Composite									
Net of Fee Return	1.57	4.99	7.66	8.59	16.23	13.25		3/31/04	9.70
Barclays U.S. TIPS Index	0.69	2.82	6.07	6.98	8.90	7.04		3/31/04	6.04
Total US Fixed Income Composite									
Net of Fee Return	1.82	6.10	8.58	11.51	12.29	9.85	7.94	6/30/97	7.78
Barclays Universal	0.58	2.59	4.64	5.53	6.69	6.19	5.59	6/30/97	6.32
Barclays Aggregate Index	0.21	1.80	3.90	4.22	6.19	5.95	5.18	6/30/97	6.19
Blended Policy (Total US FI)	1.49	4.37	6.79	9.28	9.40	9.48	6.97	6/30/97	7.35
Total Fixed Income x TIPS									
Net of Fee Return	2.10	6.93						6/30/12	6.93
Total FI x TIPS x Pimco Multi-Sector									
Net of Fee Return	2.08	7.04						6/30/12	7.04
PIMCO Multi-Sector Strategy									
Net of Fee Return	2.28	6.04						6/30/12	6.04
Blended Policy Index	1.81	4.98						6/30/12	4.98
Total Fixed Income Composite									
Net of Fee Return	1.95	6.36	8.54	11.83	11.81	9.63	7.92	6/30/97	7.54
Blended Policy (Total FI)	1.58	4.83	6.64	9.69	9.07	9.15	7.00	6/30/97	7.21

*Please note the PSERS U.S. Long Treasuries Fund has a 4Q2012 levered return of (11.67) and an unlevered return of (0.68). All respective composites are incorporating the levered return.
*The PIMCO Multi-Sector Strategy Fund policy is as follows: 26% Barclays U.S. Agg. Bond, 16% Barclays U.S. Treasury Long, 5% Barclays Global Agg GDP-weighted Dev. Mkt ex-U.S. (Unhedged)



PA Public School Employees' Retirement Sys
Fund Return Table
Quarter Ended 12/31/12

Manager	1 Quarter	2 Quarters	3 Quarters	1 Year	3 Years	5 Years	Since 12/31/02	Inception Date	Inception Return
PTRES Composite									
Net of Fee Return	1.88	2.83	5.79	13.75	11.64	0.46	11.67	6/30/97	9.63
FTSE EPRA/NAREIT Developed RE	5.77	11.59	13.95	28.65	13.41	1.06	12.08	6/30/97	7.55
FTSE EPRA/NAREIT Developed X-US	9.50	21.60	22.15	40.95	10.07	-1.81	12.54	6/30/97	6.73
FTSE EPRA/NAREIT Global RE Index	6.33	12.78	14.46	29.87	12.71	-0.06			
Wilshire Real Est. Secs Index	2.47	2.35	5.97	17.55	18.11	5.08	11.65	6/30/97	9.38
Blended Policy (PTRES)	6.33	12.78	14.46	29.87	12.71	0.84	11.05	6/30/97	9.06
Unallocated Cash & Cash Equivalents									
Net of Fee Return	0.21	0.38	2.25	3.84	2.45	-0.40	0.63	6/30/98	0.34
ML US T-Bill 0-3 Months Index	0.02	0.05	0.06	0.07	0.09	0.43	1.69	6/30/98	2.47
Commodities Composite									
Net of Fee Return	-5.13	5.73	-1.10	2.46	2.89	-3.48		12/31/06	1.22
DJ UBS Commodity Index	-6.33	2.75	-1.92	-1.05	0.07	-5.17		12/31/06	-1.90
Total Absolute Return Composite									
Net of Fee Return	0.62	3.06	2.05	3.44	8.82			3/31/09	9.34
Blended Policy (Abs Ret)	1.82	3.68	5.57	7.50	7.75			3/31/09	7.80
Risk Parity Composite									
Net of Fee Return	2.00	9.37	14.23	19.34				6/30/11	20.82
Blended Policy (Risk Pari.)	1.64	6.39	4.01	9.92				6/30/11	4.16
MLP Composite									
Net of Fee Return	0.04	9.29	8.58	12.77	23.30			9/30/08	25.37
S&P MLP Index	-3.30	5.25	2.97	4.78	17.46			9/30/08	21.66
Total Public Market Composite									
Net of Fee Return	1.42	6.85	4.73	11.05	8.96	1.63	8.24	3/31/98	5.67
Blended Policy (Pub Mkt)	1.13	5.72	4.08	9.79	6.93	0.64	7.28	3/31/98	4.81

*Please note the PSERS Gold Fund has a 4Q2012 levered return of (80.90) and an unlevered return of (5.70). All respective composites are incorporating the levered return
*The Risk Parity Policy is as follows: 35% MSCI ACWI (\$Net), 75% Barclays Capital U.S. Treasury Index, 120% Barclays Capital World Inflation Linked Bond Hedged,
100% Net of Fee Return



PA Public School Employees' Retirement Sys
 Fund Return Table
 Quarter Ended 12/31/12

Manager	1 Quarter	2 Quarters	3 Quarters	1 Year	3 Years	5 Years	Since 12/31/02	Inception Date	Inception Return
Private Real Estate Composite									
Blended Policy (Private RE)	2.84	4.59	7.54	9.79	7.97	-10.39	5.90	3/31/81	7.34
Total Real Estate Composite									
Blended Policy (Total RE)	2.26	4.45	6.42	9.48	11.20	2.43	8.43	3/31/81	8.29
Total Alternative Investments									
Blended Policy (Total RE)	2.81	4.56	7.51	9.94	8.81	-8.70	6.72	3/31/81	7.62
Total Alternative Investments									
Venture Econ Index (Lagged) - Int	2.26	4.45	6.42	9.48	11.54	2.54	9.11	3/31/81	8.49
Venture Econ Index (Lagged) - VC	2.40	3.03	8.98	13.27	12.91	4.71	13.68	6/30/98	10.25
Venture Econ Index (Lagged) - PE	-0.02	2.08	2.08						
Venture Econ Index (Lagged)-PE/PD/VC	-0.71	-0.85	1.74	2.18	0.99	-2.89	-2.37		
Total Private Market Composite									
Blended Policy (Priv Mkt)	1.90	2.11	5.39	8.27	9.17	3.35	6.24		
	1.66	1.84	5.06	7.74	8.49	2.84	5.72	6/30/98	3.43
	2.56	3.59	8.46	12.00	11.59	-0.70	10.98	3/31/81	8.40
	1.88	2.78	5.55	8.36	9.39	2.81	6.72		



PA Public School Employees' Retirement Sys
 Fund Return Table
 Quarter Ended 12/31/12

Manager	1 Quarter	2 Quarters	3 Quarters	1 Year	3 Years	5 Years	Since 12/31/02	Inception Date	Inception Return
Total US Large Cap Composite									
Net of Fee Return	-0.22	6.18	3.15	16.10	11.18	0.67	6.58	6/30/97	4.29
Published S&P 500 Index	-0.38	5.95	3.03	16.00	10.87	1.66	7.10	6/30/97	5.01
MSCI USA Large Cap Index	-1.04	5.17	2.31	15.17	9.79	0.89			
PSERS Small Index Composite									
Net of Fee Return	3.16	9.11	4.64	18.36	14.63	6.14	11.04	6/30/92	11.75
US Small Cap Active Composite									
Net of Fee Return	2.27	8.62	2.81	13.61	11.57	4.06	9.86	6/30/97	7.94
US Micro Cap Composite									
Net of Fee Return	-6.65	-5.83	-13.14	4.05	5.81	-1.66		12/31/04	1.30
MSCI US Microcap Index	-1.60	6.58	5.17	25.07	15.36	5.17		12/31/04	4.59
Blended Policy (US Micro)	-1.60	6.58	5.17	25.07	15.36	4.56		12/31/04	3.81
Total US Equity Composite									
Net of Fee Return	0.24	6.55	3.01	15.65	11.64	1.75	7.54	12/31/99	3.35
MSCI USA IMI	-0.03	6.06	2.54	15.62	10.68	1.65	7.31	12/31/99	2.97
Wilshire 5000 Index	0.10	6.26	2.93	16.06	11.15	2.03	7.85	12/31/99	2.26
Blended Policy (Tot US Eq)	-0.03	6.06	2.54	15.62	10.68	1.76	7.71	12/31/99	2.15
PSERS ACWI x US Index Fund									
Net of Fee Return	5.99	13.96	5.44	17.57	4.56	-2.09	10.06	3/31/97	5.72
MSCI ACWI/EAFE Index Blend (N)	5.85	13.68	5.03	16.83	3.87	-2.89	9.51	3/31/97	5.17
Active Non-US Lg Cap Comp									
Net of Fee Return	5.59	13.64	6.08	19.62	8.14	-0.74	10.65	6/30/97	6.29



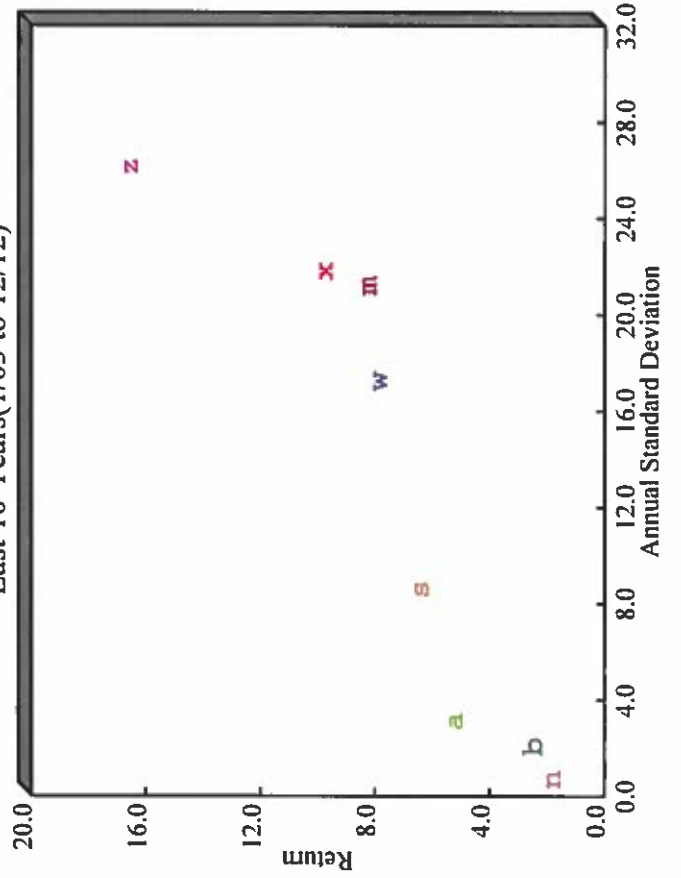
PA Public School Employees' Retirement Sys
 Fund Return Table
 Quarter Ended 12/31/12

Manager	1 Quarter	2 Quarters	3 Quarters	1 Year	3 Years	5 Years	Since 12/31/02	Inception Date	Inception Return
Active Non-US Sm Cap Comp									
Net of Fee Return	6.23	18.09	9.00	27.64	11.71	0.33		6/30/05	7.89
MSCI ACWI ex-US Sm Cap Idx (N)	4.90	13.86	3.70	18.52	6.54	-0.39		6/30/05	6.80
Blended Policy (Act Non-US Sm)	4.90	13.86	3.70	18.52	6.54	-0.12		6/30/05	7.62
Passive Emerging Markets Composite									
Net of Fee Return	5.48							9/30/12	5.48
MSCI EM Index (N)	5.58							9/30/12	5.58
Active Emerg Mkts Comp									
Net of Fee Return	6.38	14.49	5.41	21.32	5.18	-1.11	15.79	6/30/97	6.45
MSCI EM Index (N)	5.58	13.75	3.63	18.22	4.66	-0.92	16.52	6/30/97	6.67
MSCI EM Index (G)	5.61	13.93	3.93	18.62	4.98	-0.61	16.88	6/30/97	6.94
Blended Policy (EM)	5.58	13.75	3.63	18.22	4.66	-0.89	16.72	6/30/97	6.84
Total Non-US Equity Composite									
Net of Fee Return	6.00	14.24	5.54	18.66	6.05	-0.45	11.27	9/30/99	6.15
MSCI-AC World Ex US IMI (\$N)	5.73	13.70	4.87	17.03	4.18	-2.59	10.13	9/30/99	4.85
Blended Policy (Ttl Non-US Eq)	5.73	13.70	4.87	17.03	4.18	-1.76	10.31	9/30/99	4.71
Total Equity Composite									
Net of Fee Return	3.24	10.52	4.33	17.21	8.45	0.59	8.84	6/30/97	6.09
MSCI AC World IMI Index (N)	2.99	10.04	3.79	16.38	7.02	-0.73	8.59	6/30/97	4.65
MSCI ACWI IMI with USA (gross)	3.09	10.22	4.04	16.75	7.31	-0.45	8.90		
Blended Policy (Total Eq)	3.09	10.22	4.04	16.75	7.16	-0.02	8.42	6/30/97	5.23

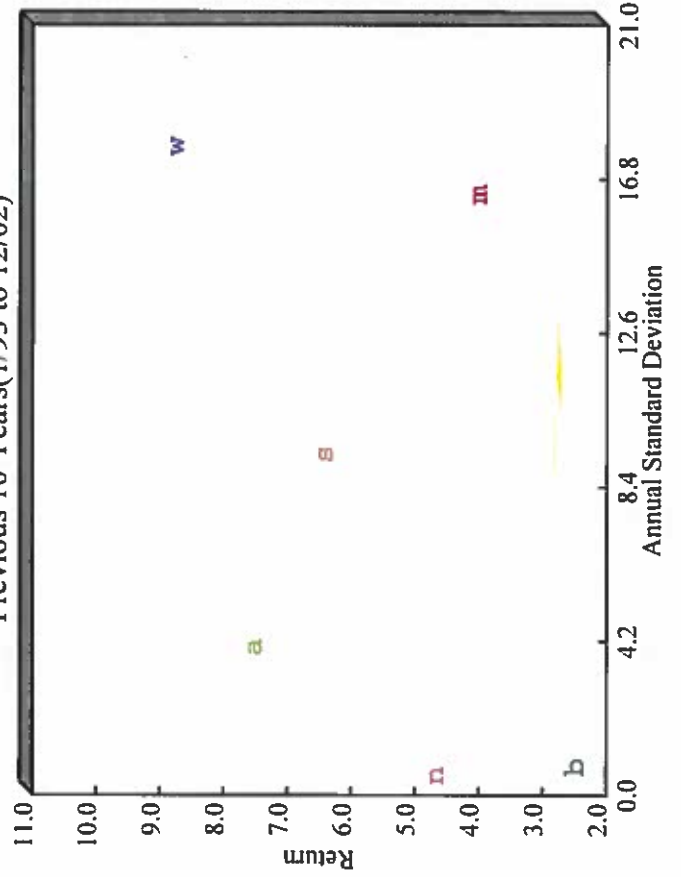
Market Environment Overview of Major Asset Classes As of 12/31/12

Indices	Legend	Returns										10 Year Std Dev
		Qtr	Ytd	1Yr	3Yrs	5Yrs	10Yrs	20Yrs				
U.S. Equity (Wilshire 5000)	w	0.10	16.06	16.06	11.15	2.03	7.85	8.30	17.45			
U.S. Bonds (Barclays Aggregate)	a	0.21	4.22	4.22	6.19	5.95	5.18	6.34	3.33			
Non U.S. Equity (ACWI X US Net)	x	5.85	16.83	16.83	3.87	-2.89	9.74	--	22.02			
Developed Equity (EAFE Net)	m	6.57	17.31	17.31	3.56	-3.69	8.21	6.09	21.43			
Emerging Equity (Emg Mkts Net)	z	5.58	18.22	18.22	4.66	-0.92	16.52	--	26.33			
Int'l Bonds (Citigroup Non-US Gov't Bond)	s	-2.36	1.51	1.51	3.95	5.24	6.38	6.40	8.81			
Treasury Bills (91 Day)	n	0.04	0.11	0.11	0.11	0.52	1.78	3.21	0.93			
Consumer Price Index	b	-0.78	1.74	1.74	2.06	1.80	2.41	2.43	2.30			

Last 10 Years(1/03 to 12/12)



Previous 10 Years(1/93 to 12/02)



**Market Environment
U.S. Common Stocks**
As of 12/31/12

	Returns						
	Qtr	Ytd	1Yr	3Yrs	5Yrs	10Yrs	20Yrs
Indices							
Standard & Poor's 500	-0.38	15.98	15.98	10.86	1.65	7.10	8.21
Wilshire 5000	0.10	16.06	16.06	11.15	2.03	7.85	8.30
Wilshire 4500	3.07	17.99	17.99	13.27	3.95	10.67	8.98
Wilshire US Large Cap	-0.20	15.74	15.74	10.85	1.67	7.42	8.18
Wilshire US Small Cap	3.10	18.76	18.76	13.94	5.47	11.52	9.94
Wilshire Real Est. Secs	2.47	17.55	17.55	18.11	5.08	11.65	10.81
Styles							
Wilshire US Large Growth	-0.74	16.90	16.90	10.13	2.71	7.55	7.43
Wilshire US Large Value	0.29	14.56	14.56	11.47	0.53	7.16	8.60
Wilshire US Small Growth	1.74	15.69	15.69	14.26	5.11	12.01	8.12
Wilshire US Small Value	4.29	21.52	21.52	13.39	5.78	10.92	11.34
Sectors (Wilshire 5000)							
Consumer Discretionary	2.88	23.86	23.86	18.62	8.52	9.11	--
Consumer Staples	-1.63	10.60	10.60	12.80	6.52	8.95	--
Energy	-2.69	3.81	3.81	10.07	0.13	13.89	--
Financials	4.88	26.56	26.56	7.56	-6.12	1.51	--
Health Care	-0.43	18.80	18.80	11.74	5.15	7.27	--
Industrials	4.84	16.36	16.36	13.44	1.17	8.62	--
Information Technology	-4.89	13.75	13.75	8.79	3.54	8.92	--
Materials	2.89	16.19	16.19	10.02	1.45	10.71	--
Telecommunication Services	-5.79	18.36	18.36	13.69	2.65	8.03	--
Utilities	-2.42	2.26	2.26	9.52	1.19	10.67	--

Index Definitions

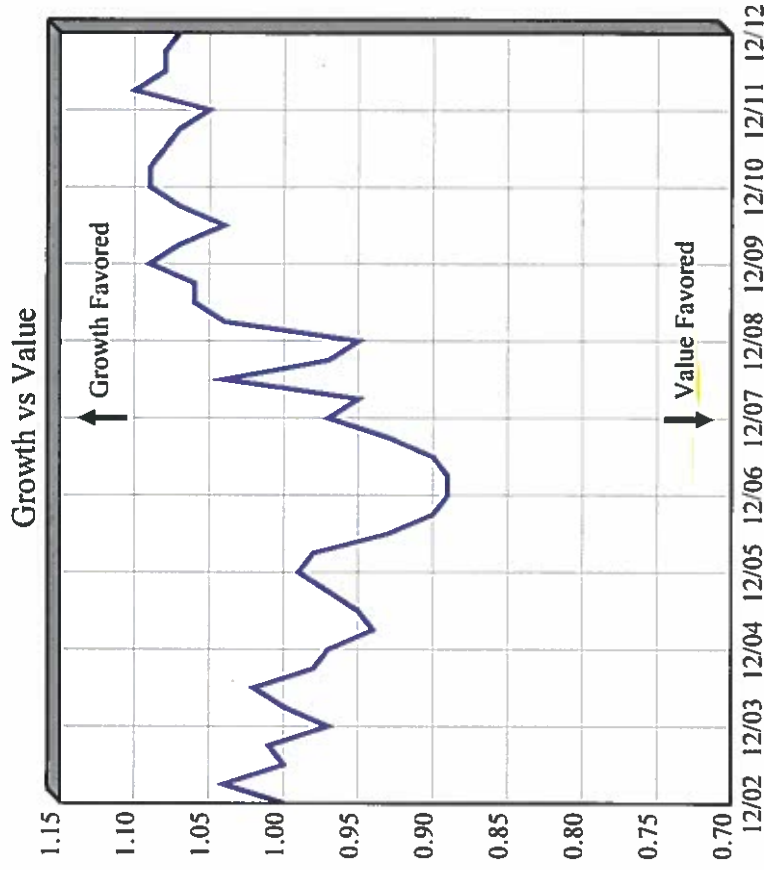
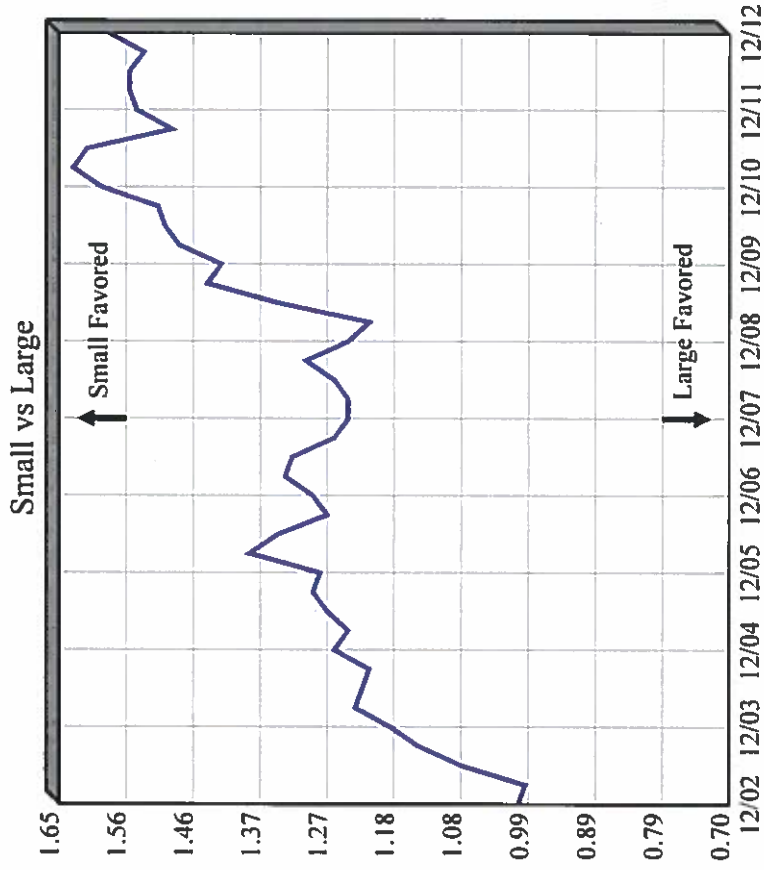
Wilshire 5000: All publicly traded U.S. corporations
 Wilshire 4500: All Wilshire 5000 companies excluding large S&P500 companies
 Wilshire US Large Cap: Largest 750 publicly traded companies
 Wilshire US Small Cap: Companies ranking between 750 and 2500 by market capitalization

Style Definitions (Wilshire Style Indices)

Large Co: Largest 750 companies in the Wilshire 5000
 Small Co: Next 1750 companies in the Wilshire 5000
 Value: Relatively low P/E and P/B ratios
 Growth: Relatively high P/E and P/B ratios



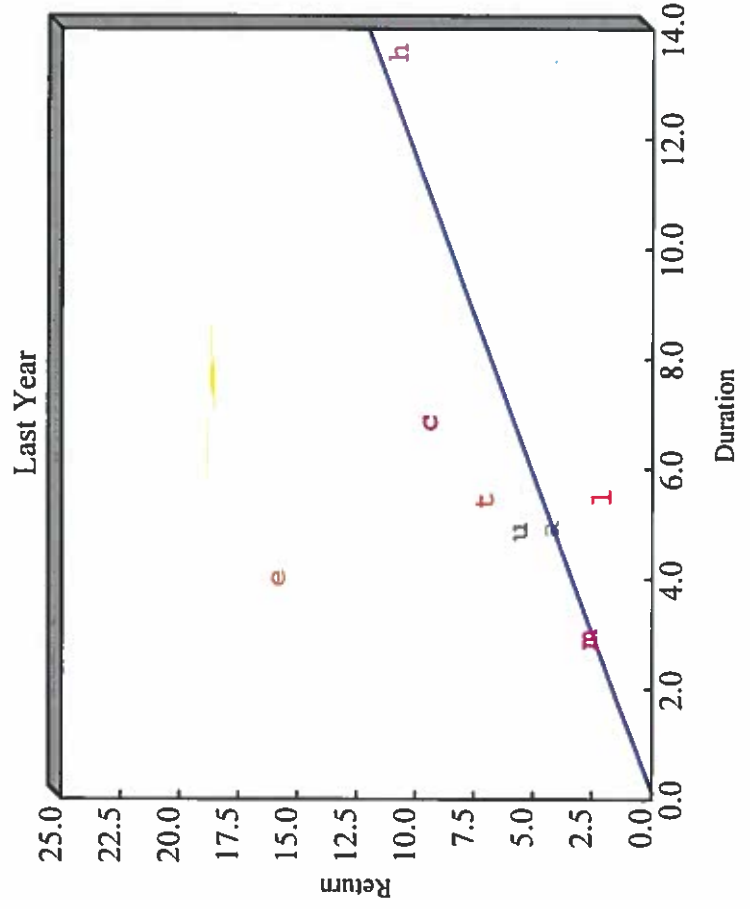
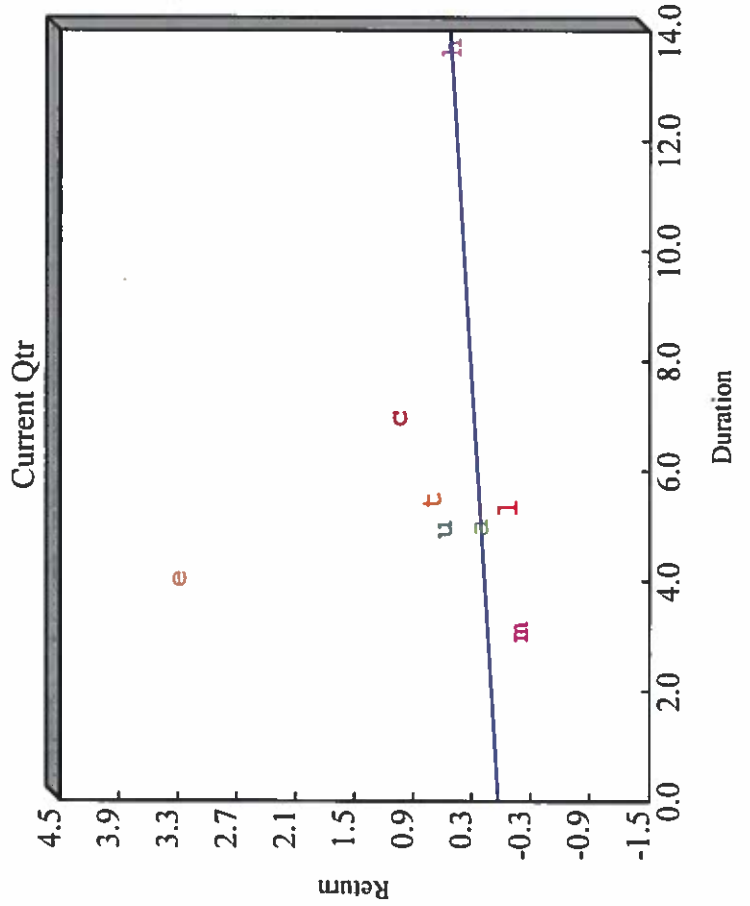
Market Environment U.S. Common Stocks Relative Return As of 12/31/12



Based on Wilshire Style Indices

Market Environment U.S. Fixed Income Indices As of 12/31/12

Indices	Legend	Returns							Characteristics (Current Qtr)		
		Qtr	Ytd	1Yr	3Yrs	5Yrs	10Yrs	20Yrs	Eff Maturity	Eff Duration	Yld to Mat
Barclays Aggregate	a	0.21	4.22	4.22	6.19	5.95	5.18	6.34	6.96	5.06	1.74
Barclays Treasury	l	-0.09	2.00	2.00	5.85	5.40	4.75	6.14	6.60	5.43	0.86
Barclays Credit (Corporate)	c	1.04	9.37	9.37	8.73	7.65	6.23	7.05	10.50	7.05	2.57
Barclays Mortgage	m	-0.20	2.59	2.59	4.72	5.67	5.08	6.17	4.77	3.18	2.22
Barclays High Yield	e	3.29	15.81	15.81	11.86	10.33	10.62	8.20	6.74	4.12	6.13
Citigroup High Grade	h	0.49	10.68	10.68	13.65	10.46	7.71	8.31	26.42	13.78	3.67
Barclays Universal	u	0.58	5.53	5.53	6.69	6.19	5.59	6.53	6.99	5.03	2.13
Barclays US TIPS	t	0.69	6.98	6.98	8.90	7.04	6.65	--	8.92	5.56	1.51

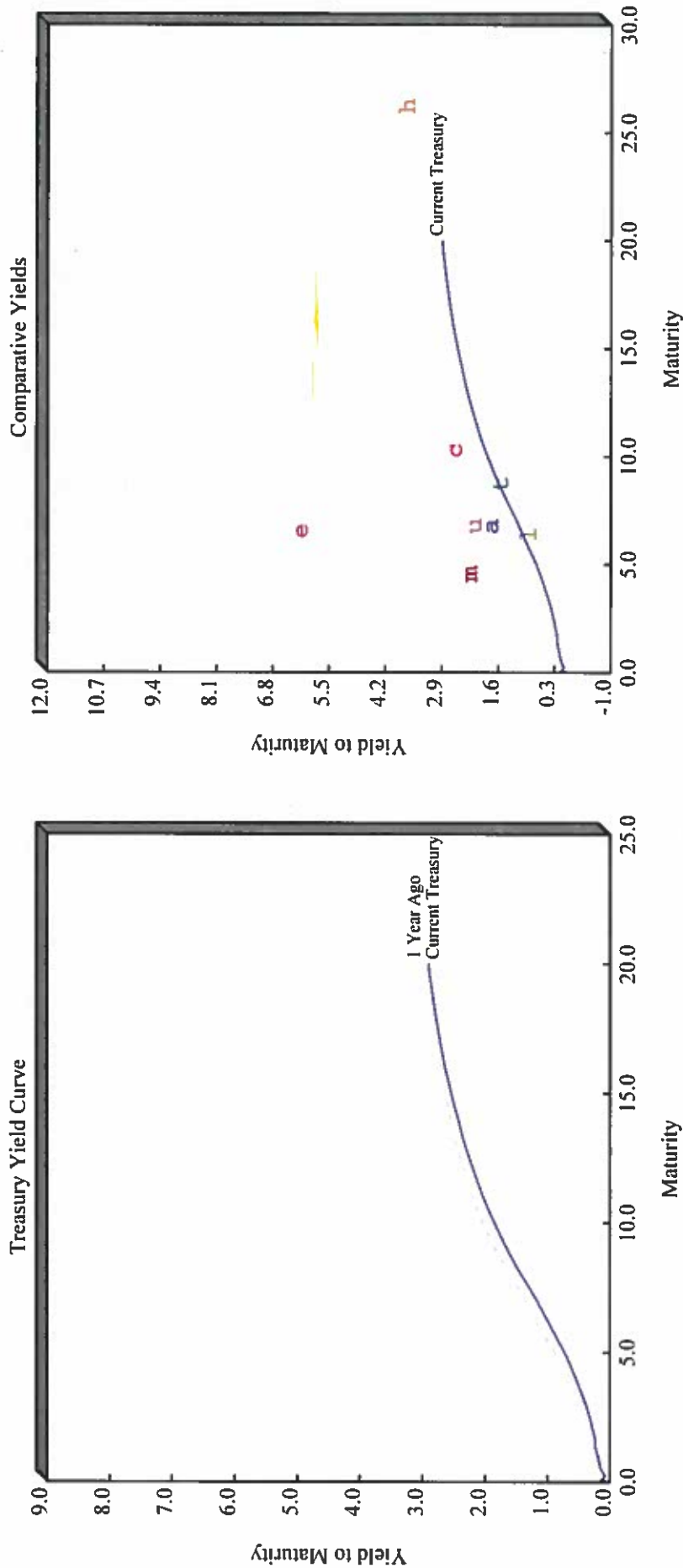


Market Environment
 U.S. Fixed Income Markets
 Historical Spread Comparison to Treasuries As of 12/31/2



Description	Legend	Current Qtr Spread	Median Spread (10 Years)
Barclays Mortgage	—	1.74	2.05
Barclays Long Agencies	⋯	0.94	0.85
Barclays AAA Long Corp	- - -	1.02	0.95
Barclays BAA Long Corp	- - -	2.70	2.29
Barclays High Yield	—	5.49	5.86

Market Environment U.S. Fixed Income Markets Yield Spread To Treasuries As of 12/31/12

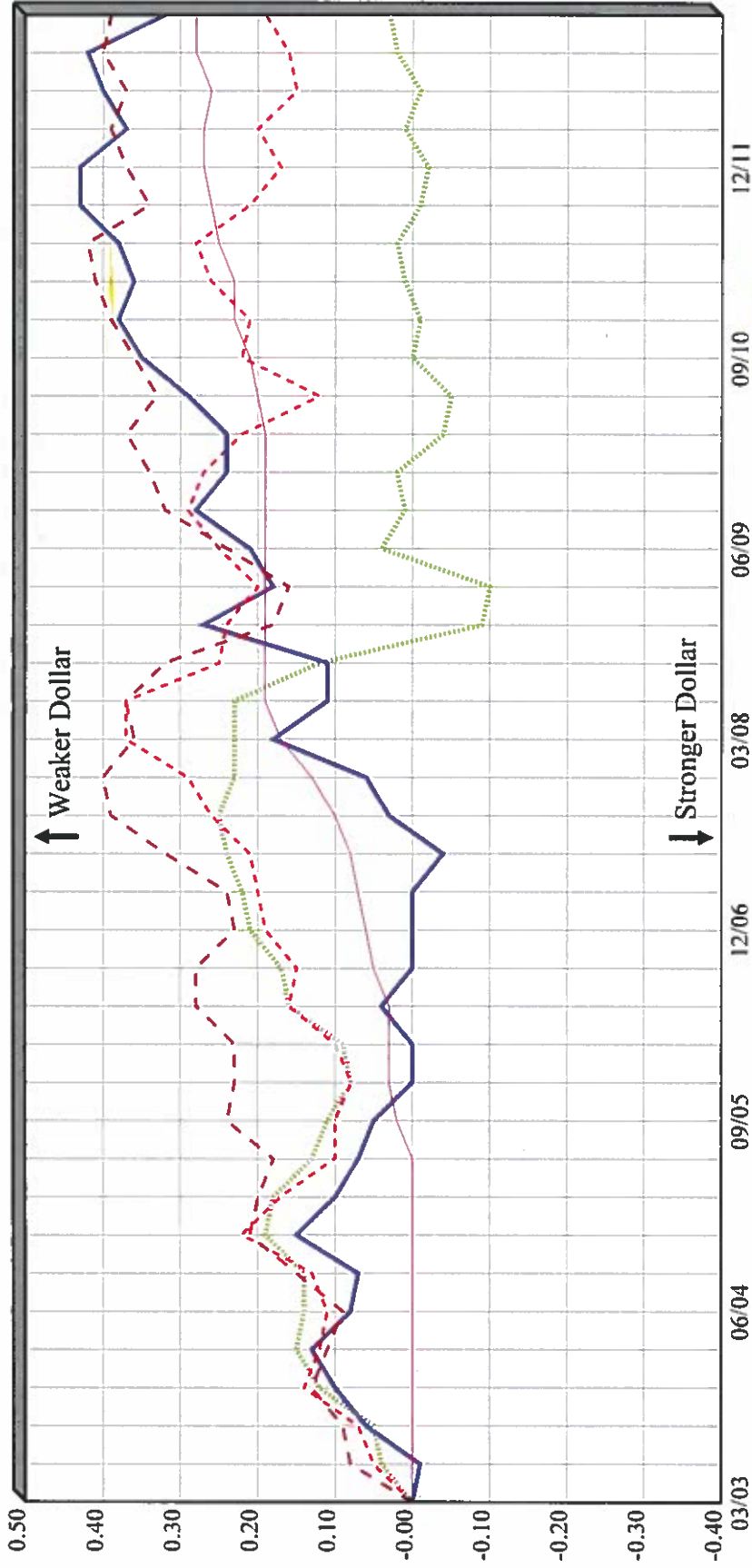


Description	Legend	Eff Maturity	Yield to Mat
Barclays Aggregate	a	6.96	1.74
Barclays Treasury	l	6.60	0.86
Barclays Credit	c	10.50	2.57
Barclays Mortgage	m	4.77	2.22
Barclays High Yield	e	6.74	6.13
Citigroup High Grade	h	26.42	3.67
Barclays Universal	u	6.99	2.13
Barclays U.S. TIPS	t	8.92	1.51

**Market Environment
International Markets
As of 12/31/12**

	Returns							10 Year Std Dev
	Qtr	Ytd	1Yr	3Yrs	5Yrs	10Yrs	20Yrs	
Equity(in U.S. dollars)								
U.S. (S & P 500)	-0.38	15.98	15.98	10.86	1.65	7.10	8.21	16.88
Non U.S. (ACWI X U.S.) Net	5.85	16.83	16.83	3.87	-2.89	9.74	--	22.02
Developed (EAFE) Net	6.57	17.31	17.31	3.56	-3.69	8.21	6.09	21.43
Emerging (Emg Mkts) Net	5.58	18.22	18.22	4.66	-0.92	16.52	--	26.33
Europe	7.01	19.12	19.12	3.25	-4.34	8.37	8.17	23.41
Pacific	5.90	14.42	14.42	4.59	-2.01	7.99	3.19	19.70
France	10.83	21.29	21.29	-1.12	-6.28	7.23	6.93	25.43
Germany	8.51	30.90	30.90	5.16	-4.66	11.72	8.02	29.11
Japan	5.78	8.18	8.18	2.27	-4.25	4.93	1.06	19.58
United Kingdom	4.17	15.25	15.25	6.89	-2.00	8.05	7.56	21.60
Equity(in local currency)								
Non U.S. (ACWI X US) Net	6.79	17.53	17.53	3.90	-2.67	7.25	--	17.22
Developed (EAFE) Net	7.83	18.77	18.77	3.30	-3.86	5.64	4.90	17.22
Emerging (Emg Mkts) Net	5.34	17.45	17.45	5.92	0.84	15.15	--	20.64
Europe	5.27	16.60	16.60	4.37	-2.37	6.52	7.59	17.49
Pacific	13.02	23.05	23.05	1.80	-6.20	4.26	1.26	19.09
France	8.31	21.03	21.03	2.55	-3.84	5.07	6.51	19.70
Germany	5.90	29.98	29.98	8.68	-2.39	9.36	7.73	23.54
Japan	17.71	21.89	21.89	-0.08	-8.96	1.70	-0.75	21.86
United Kingdom	3.63	10.77	10.77	7.03	2.27	8.06	7.24	15.05
% Change in Exchange Rates								
Euro vs Dollar	2.48	1.56	1.56	-2.78	-2.05	2.31	--	10.24
Yen vs Dollar	-10.02	-11.02	-11.02	2.49	5.26	3.22	1.85	11.01
Pound vs Dollar	0.66	4.59	4.59	0.22	-3.97	0.10	0.35	10.46
International Fixed Income								
Citigroup Non-US Gov't Bond	-2.36	1.51	1.51	3.95	5.24	6.38	6.40	8.81
Citigroup World Bond	-1.71	1.65	1.65	4.37	5.27	6.04	6.34	7.41
Citigroup Non-US Hedged	1.20	5.51	5.51	4.01	4.47	4.30	6.40	3.11
Barclays Global Aggregate	-0.48	4.32	4.32	5.17	5.44	5.98	6.33	5.84

Market Environment
 U.S. Dollar Cost of Foreign Currencies
 As of 12/31/12



Description	Legend
Japanese Yen	—
U.K. Pound	⋯
Euro	- - -
Canadian Dollar	- · -
Chinese Yuan	—

Market Environment
Fund Return Table
Quarter Ended 12/31/12

Manager	1 Quarter	2 Quarters	3 Quarters	1 Year	3 Years	5 Years	Since 12/31/02	Inception Date	Inception Return
PSERS INDICES									
Wilshire 5000	0.10	6.26	2.93	16.06	11.15	2.03	7.85	12/31/70	10.23
Wilshire 4500	3.07	8.48	3.31	17.99	13.27	3.95	10.67	9/30/60	13.10
Russell 3000	0.25	6.51	3.16	16.43	11.21	2.04	7.68	12/31/78	11.43
Published S&P 500	-0.38	5.95	3.03	16.00	10.87	1.66	7.10	3/31/82	11.51
S&P 500/Citigroup Value Index	1.64	8.04	4.18	17.69	10.47	-0.33	6.93	12/31/92	8.16
S&P 500/Citigroup Growth	-2.04	4.24	2.10	14.62	11.33	3.39	7.10	12/31/74	10.83
Russell 1000	0.12	6.44	3.12	16.42	11.12	1.91	7.52	12/31/78	11.45
Russell 1000 Value	1.53	8.12	5.75	17.50	10.86	0.59	7.37	12/31/78	11.96
Russell 1000 Growth	-1.33	4.70	0.50	15.26	11.35	3.13	7.53	12/31/78	10.55
Published S&P 400	3.61	9.25	3.86	17.88	13.62	5.15	10.53	12/31/91	11.28
S&P Citigroup 400 Value	4.51	9.54	5.03	18.56	12.40	4.29	10.44	6/30/91	12.11
S&P 400/Citigroup Growth Index	2.75	8.98	2.80	17.27	14.90	5.94	10.51	6/30/99	7.41
S&P MLP Index	-3.30	5.25	2.97	4.78	17.46	11.91	15.26	9/30/01	13.58
Russell 2500	3.10	8.83	4.32	17.87	13.34	4.34	10.48	12/31/78	12.71
Russell 2500 Value	4.15	10.24	6.90	19.22	12.88	4.55	10.20	12/31/85	11.21
Russell 2500 Growth	1.77	7.08	1.33	16.14	13.78	4.06	10.55	12/31/85	8.95
Published S&P 600	2.22	7.73	3.87	16.33	14.07	5.14	10.45	12/31/93	9.64
S&P 600/Citigroup Value Index	3.19	10.16	4.74	18.21	13.29	5.51	10.47	6/30/01	7.68
S&P 600/Citigroup Growth Index	1.28	5.42	3.05	14.56	14.96	5.50	10.81	6/30/01	7.70
Russell 2000	1.85	7.19	3.47	16.34	12.25	3.55	9.72	12/31/78	11.38
Russell 2000 Value	3.23	9.07	5.79	18.05	11.58	3.54	9.50	12/31/78	13.17
Russell 2000 Growth	0.45	5.31	1.16	14.59	12.81	3.49	9.80	12/31/78	9.19
Wilshire US Micro Cap	-2.06	5.08	2.09	21.24	10.86	2.04	9.71	6/30/78	11.11

Market Environment
Fund Return Table
Quarter Ended 12/31/12

Manager	1 Quarter	2 Quarters	3 Quarters	1 Year	3 Years	5 Years	Since 12/31/02	Inception Date	Inception Return
Wilshire Real Est. Secs	2.47	2.35	5.97	17.55	18.11	5.08	11.65	12/31/77	12.11
Wilshire REIT Index	2.48	2.33	6.14	17.59	18.21	5.25	11.57	12/31/77	12.60
FTSE EPRA/NAREIT Global RE Index	6.33	12.78	14.46	29.87	12.71	-0.06		3/31/05	5.33
FTSE EPRA/NAREIT Developed RE	5.77	11.59	13.95	28.65	13.41	1.06	12.08	12/31/89	7.70
FTSE EPRA/NAREIT Developed x N Am	9.50	21.60	22.15	40.95	10.07	-1.81	12.54	3/31/95	8.23
PSERS NCREIF Lagged	2.34	5.08	7.80	11.00	10.90	2.26	8.35	12/31/80	8.37
NTFI Core Index (ValueW-Lagged)	2.53	4.88	7.55	10.47	11.13	-2.03	5.68	3/31/78	7.24
NTFI Opportunistic (ValueW-Lagged)	2.79	4.92	7.00	9.51	10.95	-8.21	7.59	12/31/88	6.99
NTFI Value Added Closed-End (ValueW-L)	0.79	3.07	4.53	8.96	4.74	-6.15	4.78	6/30/88	5.72
Venture Econ Index (Lagged) - VC	-0.71	-0.85	1.74	2.18	0.99	-2.89	-2.37	12/31/01	-4.04
Venture Econ Index (Lagged) - PE/PD	1.90	2.11	5.39	8.27	9.17	3.35	6.24	12/31/01	5.03
Venture Econ Index(Lagged)-PE/PD/VC	1.66	1.84	5.06	7.74	8.49	2.84	5.72	3/31/98	3.43
Venture Econ Index (Lagged) -Internal	-0.02	2.08	2.08					3/31/12	2.08
PSERS MSCI ACWI X US (G)	5.89	13.83	5.43	17.39	4.33	-2.44	10.22	12/31/87	6.17
MSCI ACWI Ex-US (LC Gross)	6.58	12.12	6.31	16.87	3.68	-2.60	7.50	12/31/87	6.36
MSCI AC World IMI Index (\$N)	2.99	10.04	3.79	16.38	7.02	-0.73	8.59	6/30/94	6.16
MSCI ACWI X US IMI Index (N)	5.73	13.70	4.87	17.03	4.18	-2.59	10.13	6/30/94	4.76
MSCI ACWI with USA Gross IMI Index (N)	3.09	10.22	4.04	16.75	7.31	-0.45	8.90	9/30/01	7.01
MSCI-AC World Ex US IMI Index (LC Net)	6.50	12.07	5.74	16.59	1.76	-3.75	6.88	6/30/94	4.25
PSERS MSCI EAFE Index (N)	6.57	13.94	5.82	17.31	3.56	-3.69	8.21	12/31/69	9.07
PSERS MSCI EMF Index (G)	5.61	13.93	3.93	18.62	4.98	-0.61	15.91	12/31/87	12.36
PSERS MSCI EAFE + Canada (N)	5.92	13.65	5.47	16.41	3.65	-3.43	8.60	12/31/69	9.06
Citigroup World ex-U.S. EMI	5.17	13.94	4.28	18.55	7.33	-0.91	12.36	6/30/89	6.00
MSCI ACWI X US Small Cap (N)	4.90	13.86	3.70	18.52	6.54	-0.39	13.16	6/30/94	5.03

Market Environment
Fund Return Table
Quarter Ended 12/31/12

Manager	1 Quarter	2 Quarters	3 Quarters	1 Year	3 Years	5 Years	Since 12/31/02	Inception Date	Inception Return
MSCI - World Ex USA Small (\$Net)	4.84	13.83	3.38	17.47	7.19	-0.70	17.49	6/30/07	-2.22
MSCI Emerging Mkts Small Cap Index	5.10	13.94	4.79	22.22	4.21	0.21		6/30/94	5.39
Barclays Universal	0.58	2.59	4.64	5.53	6.69	6.19	5.59	12/31/89	7.07
Barclays Aggregate	0.21	1.80	3.90	4.22	6.19	5.95	5.18	9/30/60	6.89
Barclays Global Aggregate	-0.48	2.78	3.42	4.32	5.17	5.44	5.98	12/31/89	6.92
Barclays Multiverse Index	-0.29	3.08	3.71	4.84	5.41	5.60	6.18	12/31/98	5.49
Barclays GlobalAgg GDPWeighted Dev xU	0.61	5.10	4.04	6.69	4.70	5.25	6.65	12/31/06	6.19
Barclays U.S. TIPS	0.69	2.82	6.07	6.98	8.90	7.04	7.65	9/30/97	7.28
Barclays Long Treasury	-0.77	-0.57	9.93	3.56	13.74	9.71	7.65	12/31/72	8.96
BGI Custom IL Bond Index	2.10	5.33	6.81	8.80	7.90	6.95	10.62	6/30/04	6.57
Barclays High Yield	3.29	7.97	9.95	15.81	11.86	10.33	10.24	6/30/83	9.54
CS High Yield	3.15	7.55	9.23	14.72	11.44	9.52	10.24	12/31/85	9.29
JP Morgan GBI EM Global Diversified	4.14	9.14	7.82	16.76	9.89	8.93	12.30	12/31/02	12.30
Barclays Emerging Mkt 10% Country Cap	4.20	9.39	8.02	16.01	9.49	5.67	5.08	6/30/08	7.47
Barclays Mortgage	-0.20	0.92	2.02	2.59	4.72	5.67	5.08	12/31/75	8.26
HFN AB Index	2.12	3.52	5.61	9.04	4.41	0.52	1.78	9/30/08	4.46
91-Day Treasury Bill	0.04	0.07	0.10	0.11	0.11	0.72	1.60	9/30/60	5.38
1 Month LIBOR Rate	0.05	0.11	0.17	0.23	0.25	0.33	1.60	12/31/05	1.97
Citigroup 1 Month T-Bill	0.02	0.03	0.05	0.05	0.07	0.43	1.69	6/30/86	3.78
ML US T-Bill 0-3 Months	0.02	0.05	0.06	0.07	0.09	0.43	1.69	12/31/97	2.56
Goldman Sachs Commodity	-3.28	7.88	-5.48	0.07	2.54	-8.11	2.75	9/30/89	4.69
MSCI- World (Energy Sector)	-2.10	6.76	-1.24	2.50	5.11	-1.68	11.60	12/31/97	8.75
MSCI Metals and Mining	3.70	12.76	-3.26	1.15	-3.18	-8.94		3/31/04	7.43

**Market Environment
 Fund Return Table
 Quarter Ended 12/31/12**

Manager	1 Quarter	2 Quarters	3 Quarters	1 Year	3 Years	5 Years	Since 12/31/02	Inception Date	Inception Return
MSCI - World (RE Mng/Dev Ind.) Index	10.25	24.49	22.68	45.73	10.77	-0.92		9/30/03	10.38
MSCI World (Agricultural Prod) Index	3.04	0.97	-8.76	4.60	1.11	-7.26	9.06	12/31/00	5.33
MSCI World (Constr. & Farm Mach.) Indx	9.71	11.35	-5.05	14.82	14.04	1.00	16.92	12/31/00	14.09
MSCI - World (Materials Sector)	5.03	13.33	1.42	11.79	3.03	-2.29	12.27	12/31/97	8.24
PSERS Currency Hedge Bnmk	0.00	0.00	0.00	0.00	0.00	1.68		3/31/06	0.33
PSERS Blended Policy (Risk Parity)	1.64	6.39	4.01	9.92				12/31/10	4.04
MSCI ACWI (N)	2.88	9.91	3.80	16.13	6.63	-1.16	8.11	3/31/01	4.54
Barclays Treasury	-0.09	0.48	3.33	2.00	5.85	5.40	4.75	12/31/72	7.86
Barclays World Infl. Linked Idx Hedged	1.76	2.78	4.31	5.90	7.44	6.29	6.13	12/31/96	6.97
DJ UBS Commodity Index	-6.33	2.75	-1.92	-1.05	0.07	-5.17	4.10	12/31/01	5.91
Dow Jones UBS Gold Index	-5.64	4.06	-0.28	6.07	14.40	13.83	16.04	3/31/91	7.32
LIBOR 3 MONTH	0.08	0.20	0.31	0.45	0.37	0.98	2.15	9/30/97	3.02
MSCI EAFE Hedged Gross	7.03	11.19	4.11	13.79	-0.08	-6.67	3.31	12/31/87	2.88
S&P GSCI Precious Metals Index	-6.66	4.70	-1.35	6.22	15.04	13.86	16.35	12/31/72	7.99
MSCI Emerging Markets Large Index(Net)	5.58	13.71	3.60	17.81	4.71	-0.93	16.00	6/30/94	5.49
Standard & Poor's 500	-0.38	5.94	3.02	15.98	10.86	1.65	7.10	9/30/60	9.84
Barclays Global Aggregate Index Hedged	0.88	2.91	4.46	5.72	5.24	5.27	4.76	9/30/91	6.44



PA Public School Employees' Retirement Sys
 Asset Allocation
 PSERS Total Fund
 Quarter Ended 12/31/12

Manager Name	Equity		Bonds		Cash		Intl Equity		Intl Bonds		Real Estate		Special Invest		Other		As Allocated To Manager	
	\$(000)	%	\$(000)	%	\$(000)	%	\$(000)	%	\$(000)	%	\$(000)	%	\$(000)	%	\$(000)	%	\$(000)	%
US Equity x-E/M Composite	3,489,275	7.0	0	0.0	238,226	0.5	0	0.0	0	0.0	0	0.0	0	0.0	0	0.0	3,727,502	7.5
E/M US Equity Composite	179,354	0.4	0	0.0	9,426	0.0	0	0.0	0	0.0	0	0.0	0	0.0	0	0.0	188,780	0.4
Managed Equity	3,668,629	7.4	0	0.0	247,653	0.5	0	0.0	0	0.0	0	0.0	0	0.0	0	0.0	3,916,282	7.9
US Fixed Income x-E/M Composite	0	0.0	8,411,895	17.0	20,776	0.0	0	0.0	0	0.0	0	0.0	0	0.0	0	0.0	8,432,670	17.0
E/M US Core Plus FI Composite	0	0.0	142,871	0.3	995	0.0	0	0.0	0	0.0	0	0.0	0	0.0	0	0.0	143,866	0.3
PIMCO Multi-Sector Strategy	0	0.0	875,026	1.8	0	0.0	0	0.0	0	0.0	0	0.0	0	0.0	0	0.0	875,026	1.8
Managed Fixed	0	0.0	9,429,791	19.0	21,771	0.0	0	0.0	0	0.0	0	0.0	0	0.0	0	0.0	9,451,562	19.1
Unallocated Cash & Cash Equivalents	0	0.0	0	0.0	1,902,672	3.8	0	0.0	0	0.0	0	0.0	0	0.0	0	0.0	1,902,672	3.8
Unallocated STIF/Dreyfus	0	0.0	0	0.0	1,902,672	3.8	0	0.0	0	0.0	0	0.0	0	0.0	0	0.0	1,902,672	3.8
Non-U.S. Equity x-E/M Composite	0	0.0	0	0.0	109,226	0.2	4,603,182	9.3	0	0.0	0	0.0	0	0.0	0	0.0	4,712,408	9.5
E/M Non-US Equity Composite	0	0.0	0	0.0	1,157	0.0	122,757	0.2	0	0.0	0	0.0	0	0.0	0	0.0	123,914	0.3
Int'l Equity	0	0.0	0	0.0	110,383	0.2	4,725,940	9.5	0	0.0	0	0.0	0	0.0	0	0.0	4,836,323	9.8
Global Fixed Income Comp	0	0.0	0	0.0	90,434	0.2	0	0.0	1,252,261	2.5	0	0.0	0	0.0	0	0.0	1,342,695	2.7
Global Fixed Income	0	0.0	0	0.0	90,434	0.2	0	0.0	1,252,261	2.5	0	0.0	0	0.0	0	0.0	1,342,695	2.7
Private Real Estate Composite	0	0.0	0	0.0	0	0.0	0	0.0	0	0.0	6,337,294	12.8	0	0.0	0	0.0	6,337,294	12.8
PTRES Composite	192,616	0.4	0	0.0	0	0.0	0	0.0	0	0.0	0	0.0	0	0.0	0	0.0	192,616	0.4
Real Estate	192,616	0.4	0	0.0	0	0.0	0	0.0	0	0.0	6,337,294	12.8	0	0.0	0	0.0	6,529,910	13.2
Managed Stock Distribution	4,922	0.0	0	0.0	0	0.0	0	0.0	0	0.0	0	0.0	0	0.0	0	0.0	4,922	0.0
Private Equity Composite	0	0.0	0	0.0	0	0.0	0	0.0	0	0.0	0	0.0	8,247,844	16.7	0	0.0	8,247,844	16.7
Private Debt Composite	0	0.0	0	0.0	0	0.0	0	0.0	0	0.0	0	0.0	1,677,715	3.4	0	0.0	1,677,715	3.4
Venture Capital Composite	0	0.0	0	0.0	0	0.0	0	0.0	0	0.0	0	0.0	924,309	1.9	0	0.0	924,309	1.9
Internally Managed Composite	0	0.0	0	0.0	0	0.0	0	0.0	0	0.0	0	0.0	36,386	0.1	0	0.0	36,386	0.1
Special Investments	4,922	0.0	0	0.0	0	0.0	0	0.0	0	0.0	0	0.0	10,886,255	22.0	0	0.0	10,891,177	22.0
Non-Core STIF	0	0.0	0	0.0	0	0.0	0	0.0	0	0.0	0	0.0	0	0.0	0	0.0	0	0.0
Miscellaneous Composite	888	0.0	0	0.0	33	0.0	0	0.0	0	0.0	0	0.0	0	0.0	0	0.0	921	0.0
Commodities Composite	1,474,823	3.0	0	0.0	790,136	1.6	0	0.0	0	0.0	0	0.0	0	0.0	0	0.0	2,264,959	4.6
Total Absolute Return Composite	5,217,328	10.5	0	0.0	404,293	0.8	138,314	0.3	0	0.0	268,352	0.5	0	0.0	0	0.0	6,028,287	12.2



PA Public School Employees' Retirement Sys
 Asset Allocation
 PSERS Total Fund
 Quarter Ended 12/31/12

Manager Name	Equity		Bonds		Cash		Intl Equity		Intl Bonds		Real Estate		Special Invest		Other		As Allocated To Manager	
	\$(000)	%	\$(000)	%	\$(000)	%	\$(000)	%	\$(000)	%	\$(000)	%	\$(000)	%	\$(000)	%	\$(000)	%
MLP Composite	875,966	1.8	0	0.0	17,947	0.0	0	0.0	0	0.0	0	0.0	0	0.0	0	0.0	893,913	1.8
Risk Parity Composite		0.0		0.0	0	0.0		0.0		0.0		0.0		0.0	1,442,892	2.9	1,442,892	2.9
Other	7,569,005	15.3	0	0.0	1,212,409	2.4	138,314	0.3	0	0.0	0	0.0	0	0.0	1,711,244	3.5	10,630,972	21.5
As Invested by Managers	11,435,172	23.1	9,429,791	19.0	3,585,321	7.2	4,864,254	9.8	1,252,261	2.5	6,337,294	12.8	10,886,255	22.0	1,711,244	3.5	49,501,592	100.0
As Allocated to Managers	3,916,282	7.9	9,451,562	19.1	1,902,672	3.8	4,836,323	9.8	1,342,695	2.7	6,529,910	13.2	10,891,177	22.0	10,630,972	21.5	49,501,592	100.0



PA Public School Employees' Retirement Sys
Asset Allocation
 Total Public Market Composite
 Quarter Ended 12/31/12

Manager Name	Equity		Bonds		Cash		Intl Equity		Intl Bonds		Real Estate		Special Invest		Other		As Allocated To Manager	
	\$(000)	%	\$(000)	%	\$(000)	%	\$(000)	%	\$(000)	%	\$(000)	%	\$(000)	%	\$(000)	%	\$(000)	%
US Equity x-E/M Composite	3,489,275	10.8	0	0.0	238,226	0.7	0	0	0	0.0	0	0.0	0	0.0	0	0.0	3,727,502	11.5
E/M US Equity Composite	179,354	0.6	0	0.0	9,426	0.0	0	0	0	0.0	0	0.0	0	0.0	0	0.0	188,780	0.6
Managed Equity	3,668,629	11.4	0	0.0	247,653	0.8	0	0	0	0.0	0	0.0	0	0.0	0	0.0	3,916,282	12.1
US Fixed Income x-E/M Composite	0	0.0	8,411,895	26.1	20,776	0.1	0	0	0	0.0	0	0.0	0	0.0	0	0.0	8,432,670	26.1
E/M US Core Plus FI Composite	0	0.0	142,871	0.4	995	0.0	0	0	0	0.0	0	0.0	0	0.0	0	0.0	143,866	0.4
PIMCO Multi-Sector Strategy	0	0.0	875,026	2.7	0	0.0	0	0	0	0.0	0	0.0	0	0.0	0	0.0	875,026	2.7
Managed Fixed	0	0.0	9,429,791	29.2	21,771	0.1	0	0	0	0.0	0	0.0	0	0.0	0	0.0	9,451,562	29.3
Unallocated Cash & Cash Equivalents	0	0.0	0	0.0	1,902,672	5.9	0	0	0	0.0	0	0.0	0	0.0	0	0.0	1,902,672	5.9
Unallocated STIF/Dreyfus	0	0.0	0	0.0	1,902,672	5.9	0	0	0	0.0	0	0.0	0	0.0	0	0.0	1,902,672	5.9
Non-US Equity x-E/M Composite	0	0.0	0	0.0	109,226	0.3	4,603,182	14.3	0	0.0	0	0.0	0	0.0	0	0.0	4,712,408	14.6
E/M Non-US Equity Composite	0	0.0	0	0.0	1,157	0.0	122,757	0.4	0	0.0	0	0.0	0	0.0	0	0.0	123,914	0.4
Int'l Equity	0	0.0	0	0.0	110,383	0.3	4,725,940	14.6	0	0.0	0	0.0	0	0.0	0	0.0	4,836,323	15.0
Global Fixed Income Comp	0	0.0	0	0.0	90,434	0.3	0	0	1,252,261	3.9	0	0.0	0	0.0	0	0.0	1,342,695	4.2
Global Fixed Income	0	0.0	0	0.0	90,434	0.3	0	0	1,252,261	3.9	0	0.0	0	0.0	0	0.0	1,342,695	4.2
PTRES Composite	192,616	0.6	0	0.0	0	0.0	0	0	0	0.0	0	0.0	0	0.0	0	0.0	192,616	0.6
Real Estate	192,616	0.6	0	0.0	0	0.0	0	0	0	0.0	0	0.0	0	0.0	0	0.0	192,616	0.6
Miscellaneous Composite	888	0.0	0	0.0	33	0.0	0	0	0	0.0	0	0.0	0	0.0	0	0.0	921	0.0
Non-Core STIF	0	0.0	0	0.0	0	0.0	0	0	0	0.0	0	0.0	0	0.0	0	0.0	0	0.0
Commodities Composite	1,474,823	4.6	0	0.0	790,136	2.4	0	0	0	0.0	0	0.0	0	0.0	0	0.0	2,264,959	7.0
Total Absolute Return Composite	5,217,328	16.2	0	0.0	404,293	1.3	138,314	0.4	0	0.0	0	0.0	0	0.0	268,352	0.8	6,028,287	18.7
MLP Composite	875,966	2.7	0	0.0	17,947	0.1	0	0	0	0.0	0	0.0	0	0.0	0	0.0	893,913	2.8
Risk Parity Composite	0	0.0	0	0.0	0	0.0	0	0	0	0.0	0	0.0	0	0.0	1,442,892	4.5	1,442,892	4.5
Other	7,569,005	23.5	0	0.0	1,212,409	3.8	138,314	0.4	0	0.0	0	0.0	0	0.0	1,711,244	5.3	10,630,972	32.9
As Invested by Managers	11,430,251	35.4	9,429,791	29.2	3,585,321	11.1	4,864,254	15.1	1,252,261	3.9	0	0.0	0	0.0	1,711,244	5.3	32,273,122	100.0
As Allocated to Managers	3,916,282	12.1	9,451,562	29.3	1,902,672	5.9	4,836,323	15.0	1,342,695	4.2	192,616	0.6	0	0.0	10,630,972	32.9	32,273,122	100.0



PA Public School Employees' Retirement Sys
 Asset Allocation
 PSERS Total Fund
 Quarter Ended 12/31/12

Manager Name	Equity		Bonds		Cash		Intl Equity		Intl Bonds		Real Estate		Special Invest		Other		As Allocated To Manager	
	\$(000)	%	\$(000)	%	\$(000)	%	\$(000)	%	\$(000)	%	\$(000)	%	\$(000)	%	\$(000)	%	\$(000)	%
PSERS - Misc - Equity	5,534	0.0		0.0	821	0.0		0.0		0.0							6,354	0.0
PSERS S&P 500 Index Fund	2,955,840	6.0	0	0.0	194,941	0.4	0	0.0		0.0							3,150,781	6.4
PSERS S&P 600 Index Fund	2	0.0	0	0.0	0	0.0	0	0.0		0.0							2	0.0
PSERS JP Morgan 600 Swap	47,865	0.1		0.0	0	0.0	0	0.0		0.0							47,865	0.1
PSERS JP Morgan 600 Swap II	128,375	0.3		0.0	0	0.0	0	0.0		0.0							128,375	0.3
PSERS S&P 400 Index Fund	175,083	0.4	0	0.0	-45	-0.0	0	0.0		0.0							175,038	0.4
First Pacific Advisors, Inc.	133,920	0.3	0	0.0	40,994	0.1	0	0.0		0.0							174,913	0.4
NorthPointe Capital, LLC	42,657	0.1	0	0.0	1,516	0.0	0	0.0		0.0							44,173	0.1
AH Lisanti	45,458	0.1	0	0.0	889	0.0	0	0.0		0.0							46,348	0.1
Conestoga Capital Advisors	49,192	0.1	0	0.0	1,542	0.0	0	0.0		0.0							50,734	0.1
Hellman Jordan Mgmt	36,818	0.1	0	0.0	3,657	0.0	0	0.0		0.0							40,475	0.1
Opus Capital Management	47,886	0.1	0	0.0	3,338	0.0	0	0.0		0.0							51,224	0.1
Managed Equity	3,668,629	7.4	0	0.0	247,653	0.5	0	0.0	0	0.0	0	0	0	0	0	0	3,916,282	7.9
PSERS Fixed Liquidation		0.0	1,645	0.0	-24	-0.0		0.0		0.0							1,621	0.0
Bridgewater TIPS	0	0.0	1,661,065	3.4	-4,785	-0.0	0	0.0		0.0							1,656,279	3.3
PSERS TIPS (unlevered)	0	0.0	1,082,105	2.2	26,609	0.1	0	0.0		0.0							1,108,715	2.2
PSERS TIPS (cash)	0	0.0	280,243	0.6	18,186	0.0	0	0.0		0.0							298,429	0.6
Black River Inflation Opp. Fund		0.0	75,055	0.2	0	0.0	0	0.0		0.0							75,055	0.2
MacKay Shields	0	0.0	412,423	0.8	14,613	0.0	0	0.0		0.0							427,036	0.9
TOP NPL (A)		0.0	38,374	0.1		0.0	0	0.0		0.0							38,374	0.1
TPG Opp Partners II		0.0	36,920	0.1		0.0	0	0.0		0.0							36,920	0.1
Brevan Howard CMBS Fund		0.0	229,454	0.5	0	0.0	0	0.0		0.0							229,454	0.5
Apollo European Principle Fund II		0.0	15,521	0.0	0	0.0	0	0.0		0.0							15,521	0.0
Carlyle Emerging Mezz. Opp. Fund LP		0.0	31,803	0.1	0	0.0	0	0.0		0.0							31,803	0.1
Sankaty Credit Opp. Fund V-A		0.0	35,665	0.1	0	0.0	0	0.0		0.0							35,665	0.1
BlackRock Mortgage Investors		0.0	466,259	0.9		0.0	0	0.0		0.0							466,259	0.9
Brigade Distressed Value		0.0	111,185	0.2	0	0.0	0	0.0		0.0							111,185	0.2
Cerberus Levered Loan Fund I	0	0.0	173,654	0.4	0	0.0	0	0.0		0.0							173,654	0.4
Cerberus Levered Loan Fund II		0.0	177,463	0.4	0	0.0	0	0.0		0.0							177,463	0.4
ICG Europe Fund		0.0	35,436	0.1	0	0.0	0	0.0		0.0							35,436	0.1
LBC Credit Partners		0.0	251,146	0.5		0.0	0	0.0		0.0							251,146	0.5
Mariner/Galton RMBS	0	0.0	221,879	0.4	41,640	0.1	0	0.0		0.0							263,519	0.5
Oaktree Loan Fund 2X, L.P.		0.0	71,331	0.1	11,972	0.0		0.0		0.0							83,303	0.2



PA Public School Employees' Retirement Sys
 Asset Allocation
 PSERS Total Fund
 Quarter Ended 12/31/12

Manager Name	Equity		Bonds		Cash		Intl Equity		Intl Bonds		Real Estate		Special Invest		Other		As Allocated To Manager	
	\$(000)	%	\$(000)	%	\$(000)	%	\$(000)	%	\$(000)	%	\$(000)	%	\$(000)	%	\$(000)	%	\$(000)	%
Sankaty Middle Market Fund	0	0.0	156,323	0.3	0	0.0	0	0.0	0	0.0	0	0.0	0	0.0	0	0.0	156,323	0.3
Sankaty Credit Oppt. Fund IV	0	0.0	305,078	0.6	0	0.0	0	0.0	0	0.0	0	0.0	0	0.0	0	0.0	305,078	0.6
Sankaty Advisors Bank Loans	0	0.0	369,729	0.7	0	0.0	0	0.0	0	0.0	0	0.0	0	0.0	0	0.0	369,729	0.7
PSERS U.S. Long Treasuries	0	0.0	15,941	0.0	2	0.0	0	0.0	0	0.0	0	0.0	0	0.0	0	0.0	15,943	0.0
BlackRock Global Alpha	0	0.0	613,063	1.2	0	0.0	0	0.0	0	0.0	0	0.0	0	0.0	0	0.0	613,063	1.2
PSERS Active	0	0.0	1,271,270	2.6	-82,410	-0.2	0	0.0	0	0.0	0	0.0	0	0.0	0	0.0	1,188,860	2.4
Western Asset Management	0	0.0	271,862	0.5	-5,026	-0.0	0	0.0	0	0.0	0	0.0	0	0.0	0	0.0	266,836	0.5
Piedmont Inv. Advisors	0	0.0	52,198	0.1	151	0.0	0	0.0	0	0.0	0	0.0	0	0.0	0	0.0	52,349	0.1
Pugh Capital Management	0	0.0	90,673	0.2	844	0.0	0	0.0	0	0.0	0	0.0	0	0.0	0	0.0	91,517	0.2
PIMCO Multi-Sector Strategy	0	0.0	875,026	1.8	0	0.0	0	0.0	0	0.0	0	0.0	0	0.0	0	0.0	875,026	1.8
Managed Fixed	0	0.0	9,429,791	19.0	21,771	0.0	0	0.0	0	0.0	0	0.0	0	0.0	0	0.0	9,451,562	19.1
AQR GRP EL 20 Offshore Fund	0	0.0	0	0.0	0	0.0	0	0.0	0	0.0	0	0.0	0	0.0	0	0.0	326,456	0.7
Bridgewater All Weather @15	0	0.0	0	0.0	0	0.0	0	0.0	0	0.0	0	0.0	0	0.0	0	0.0	1,116,436	2.3
Risk Parity	0	0.0	0	0.0	0	0.0	0	0.0	0	0.0	0	0.0	0	0.0	0	0.0	1,442,892	2.9
PSERS Cash Management	0	0.0	0	0.0	1,877,373	3.8	0	0.0	0	0.0	0	0.0	0	0.0	0	0.0	1,877,373	3.8
PSERS Cash Management Sub	0	0.0	0	0.0	25,298	0.1	0	0.0	0	0.0	0	0.0	0	0.0	0	0.0	25,298	0.1
Unallocated STIF/Dreyfus	0	0.0	0	0.0	1,902,672	3.8	0	0.0	0	0.0	0	0.0	0	0.0	0	0.0	1,902,672	3.8
Pareto	0	0.0	0	0.0	0	0.0	0	0.0	3,124	0.0	0	0.0	0	0.0	0	0.0	3,124	0.0
Wellington Mgmt.	0	0.0	0	0.0	31	0.0	0	0.0	407	0.0	0	0.0	0	0.0	0	0.0	438	0.0
Wasatch EM Small Cap	0	0.0	0	0.0	12,595	0.0	0	0.0	233,813	0.5	0	0.0	0	0.0	0	0.0	246,407	0.5
Westwood Global	0	0.0	0	0.0	1,401	0.0	0	0.0	74,515	0.2	0	0.0	0	0.0	0	0.0	75,916	0.2
PSERS ACWI x US	0	0.0	0	0.0	917	0.0	0	0.0	1,732,112	3.5	0	0.0	0	0.0	0	0.0	1,733,029	3.5
PSERS France Swaps	0	0.0	0	0.0	0	0.0	0	0.0	139,929	0.3	0	0.0	0	0.0	0	0.0	139,929	0.3
PSERS JP Morgan Swaps	0	0.0	0	0.0	0	0.0	0	0.0	47,892	0.1	0	0.0	0	0.0	0	0.0	47,892	0.1
PSERS JP Morgan Swaps III	0	0.0	0	0.0	0	0.0	0	0.0	130,186	0.3	0	0.0	0	0.0	0	0.0	130,186	0.3
PSERS JP Swap 4	0	0.0	0	0.0	0	0.0	0	0.0	81,898	0.2	0	0.0	0	0.0	0	0.0	81,898	0.2
PSERS JP Swap 5	0	0.0	0	0.0	0	0.0	0	0.0	27,759	0.1	0	0.0	0	0.0	0	0.0	27,759	0.1
BTC - Pan Europe	0	0.0	0	0.0	12,129	0.0	0	0.0	33,510	0.1	0	0.0	0	0.0	0	0.0	45,639	0.1
BTC - Japan	0	0.0	0	0.0	444	0.0	0	0.0	0	0.0	0	0.0	0	0.0	0	0.0	444	0.0
BTC - Canada	0	0.0	0	0.0	0	0.0	0	0.0	12,016	0.0	0	0.0	0	0.0	0	0.0	12,016	0.0
BTC - Pacific Rim Ex-Japan	0	0.0	0	0.0	19	0.0	0	0.0	14,980	0.0	0	0.0	0	0.0	0	0.0	14,999	0.0



PA Public School Employees' Retirement Sys
 Asset Allocation
 PSERS Total Fund
 Quarter Ended 12/31/12

Manager Name	Equity		Bonds		Cash		Intl Equity		Intl Bonds		Real Estate		Special Invest		Other		As Allocated To Manager	
	\$(000)	%	\$(000)	%	\$(000)	%	\$(000)	%	\$(000)	%	\$(000)	%	\$(000)	%	\$(000)	%	\$(000)	%
BTC - UBS	0	0.0	0	0.0	0	0.0	0	21,916	0.0	0.0	0.0	0.0	0.0	0.0	0.0	0.0	21,916	0.0
BTC - UBS Japan CFD	0	0.0	0	0.0	0	0.0	0	19,803	0.0	0.0	0.0	0.0	0.0	0.0	0.0	0.0	19,803	0.0
BTC - Alpha Advantage Emerging	0	0.0	0	0.0	0	0.0	0	111,080	0.2	0.0	0.0	0.0	0.0	0.0	0.0	0.0	111,080	0.2
BTC - 32 Cap Ltd.	0	0.0	0	0.0	0	0.0	0	164,313	0.3	0.0	0.0	0.0	0.0	0.0	0.0	0.0	164,313	0.3
BTC - Global Ex-US Equity	0	0.0	0	0.0	-269	-0.0	0	0	0.0	0.0	0.0	0.0	0.0	0.0	0.0	0.0	-269	-0.0
BTC - Active Currency Overlay	0	0.0	0	0.0	0	0.0	-1,044	-0.0	0.0	0.0	0.0	0.0	0.0	0.0	0.0	0.0	-1,044	-0.0
BTC - Money Market EBT	0	0.0	0	0.0	61,359	0.1	0	0	0.0	0.0	0.0	0.0	0.0	0.0	0.0	0.0	61,359	0.1
Baillie Gifford	0	0.0	0	0.0	7,595	0.0	477,864	1.0	0.0	0.0	0.0	0.0	0.0	0.0	0.0	0.0	485,459	1.0
Marathon Asset Mgmt.	0	0.0	0	0.0	8,091	0.0	468,695	0.9	0.0	0.0	0.0	0.0	0.0	0.0	0.0	0.0	476,787	1.0
Acadian Asset Mgmt	0	0.0	0	0.0	1,301	0.0	151,941	0.3	0.0	0.0	0.0	0.0	0.0	0.0	0.0	0.0	153,242	0.3
Batterymarch Int'l Sm Cap	0	0.0	0	0.0	557	0.0	60,959	0.1	0.0	0.0	0.0	0.0	0.0	0.0	0.0	0.0	61,556	0.1
Oberweis Asset Mgmt	0	0.0	0	0.0	804	0.0	93,421	0.2	0.0	0.0	0.0	0.0	0.0	0.0	0.0	0.0	94,225	0.2
Pyramis	0	0.0	0	0.0	456	0.0	117,274	0.2	0.0	0.0	0.0	0.0	0.0	0.0	0.0	0.0	117,731	0.2
Wasatch Advisors	0	0.0	0	0.0	1,772	0.0	176,137	0.4	0.0	0.0	0.0	0.0	0.0	0.0	0.0	0.0	177,909	0.4
PSERS Emerging Markets Fund	0	0.0	0	0.0	25	0.0	208,641	0.4	0.0	0.0	0.0	0.0	0.0	0.0	0.0	0.0	208,667	0.4
Glovista	0	0.0	0	0.0	660	0.0	31,272	0.1	0.0	0.0	0.0	0.0	0.0	0.0	0.0	0.0	31,932	0.1
John Hsu Capital	0	0.0	0	0.0	496	0.0	56,888	0.1	0.0	0.0	0.0	0.0	0.0	0.0	0.0	0.0	57,384	0.1
Shah Capital Management	0	0.0	0	0.0	0	0.0	34,598	0.1	0.0	0.0	0.0	0.0	0.0	0.0	0.0	0.0	34,598	0.1
Int'l Equity	0	0.0	0	0.0	110,383	0.2	4,725,940	9.5	0	0.0	0	0.0	0	0.0	0	0.0	4,836,323	9.8
Alliance Bernstein Global Fixed	0	0.0	0	0.0	2,774	0.0	0	0	306,868	0.6	0.0	0.0	0.0	0.0	0.0	0.0	309,642	0.6
Strategic Fixed Income LLC	0	0.0	0	0.0	-4,139	-0.0	0	0	158,451	0.3	0.0	0.0	0.0	0.0	0.0	0.0	154,312	0.3
Franklin Templeton	0	0.0	0	0.0	55,419	0.1	0	0	392,816	0.8	0.0	0.0	0.0	0.0	0.0	0.0	448,235	0.9
Stone Harbor	0	0.0	0	0.0	36,381	0.1	0	0	394,125	0.8	0.0	0.0	0.0	0.0	0.0	0.0	430,506	0.9
Global Fixed Income	0	0.0	0	0.0	90,434	0.2	1,252,261	2.5	0	0.0	0	0.0	0	0.0	0	0.0	1,342,695	2.7
Private Real Estate Composite	192,616	0.4	0	0.0	0	0.0	0	0	0	0.0	6,337,294	12.8	0.0	0.0	0.0	0.0	6,337,294	12.8
PTRES Composite	192,616	0.4	0	0.0	0	0.0	0	0	0	0.0	6,337,294	12.8	0.0	0.0	0	0.0	192,616	0.4
Real Estate																	6,529,910	13.2
Managed Stock Distribution	4,922	0.0	0	0.0	0	0.0	0	0	0	0.0	0	0.0	0	0.0	0.0	0.0	4,922	0.0
Private Equity Composite	0	0.0	0	0.0	0	0.0	0	0	0	0.0	8,247,844	16.7	0.0	0.0	0.0	0.0	8,247,844	16.7
Private Debt Composite	0	0.0	0	0.0	0	0.0	0	0	0	0.0	1,677,715	3.4	0.0	0.0	0.0	0.0	1,677,715	3.4
Venture Capital Composite	0	0.0	0	0.0	0	0.0	0	0	0	0.0	924,309	1.9	0.0	0.0	0.0	0.0	924,309	1.9



PA Public School Employees' Retirement Sys
 Asset Allocation
 PSERS Total Fund
 Quarter Ended 12/31/12

Manager Name	Equity		Bonds		Cash		Intl Equity		Intl Bonds		Real Estate		Special Invest		Other		As Allocated To Manager	
	\$(000)	%	\$(000)	%	\$(000)	%	\$(000)	%	\$(000)	%	\$(000)	%	\$(000)	%	\$(000)	%	\$(000)	%
Miscellaneous Composite	888	0.0	0	0.0	33	0.0	0	0.0	0	0.0	0	0.0	0	0.0	0	0.0	921	0.0
Other	888	0.0	0	0.0	33	0.0	0	0.0	0	0.0	0	0.0	0	0.0	0	0.0	921	0.0
Harvest MLP ALpha	374,383	0.8	0	0.0	1,437	0.0	0	0.0	0	0.0	0	0.0	0	0.0	0	0.0	375,820	0.8
Harvest Enhanced Index	5,228	0.0	0	0.0	2	0.0	0	0.0	0	0.0	0	0.0	0	0.0	0	0.0	5,230	0.0
Salient Capital Partners	254,113	0.5	0	0.0	6,135	0.0	0	0.0	0	0.0	0	0.0	0	0.0	0	0.0	260,247	0.5
Allantic Trust Private Wealth Mgmt.	242,242	0.5	0	0.0	10,373	0.0	0	0.0	0	0.0	0	0.0	0	0.0	0	0.0	252,615	0.5
Managed MLP	875,966	1.8	0	0.0	17,947	0.0	0	0.0	0	0.0	0	0.0	0	0.0	0	0.0	893,913	1.8
As Invested by Managers	11,435,172	23.1	9,429,791	19.0	3,585,321	7.2	4,864,254	9.8	1,252,261	2.5	6,337,294	12.8	10,886,255	22.0	1,711,244	3.5	49,501,592	100.0
As Allocated to Managers	4,810,194	9.7	9,451,562	19.1	1,902,672	3.8	4,836,323	9.8	1,342,695	2.7	6,529,910	13.2	10,891,177	22.0	9,737,060	19.7	49,501,592	100.0



PA Public School Employees' Retirement Sys
Asset Allocation
PSERS Healthcare & HOP
Quarter Ended 12/31/12

Manager Name	Equity		Bonds		Cash		Intl Equity		Intl Bonds		Real Estate		Special Invest		Other		As Allocated To Manager	
	\$(000)	%	\$(000)	%	\$(000)	%	\$(000)	%	\$(000)	%	\$(000)	%	\$(000)	%	\$(000)	%	\$(000)	%
PSERS Healthcare - Premium Assist	0	0.0	33,273	26.8	2,645	2.1	0	0.0	0	0.0	0	0.0	0	0.0	0	0.0	35,919	28.9
PSERS Healthcare - HOP	0	0.0	0	0.0	88,345	71.1	0	0.0	0	0.0	0	0.0	0	0.0	0	0.0	88,345	71.1
PSERS Healthcare & HOP	0	0.0	33,273	26.8	90,990	73.2	0	0.0	0	0.0	0	0.0	0	0.0	0	0.0	124,263	100.0
As Invested by Managers	0	0	33,273	26.8	90,990	73.2	0	0	0	0	0	0	0	0	0	0	124,263	100.0
As Allocated to Managers	0	0	0	0	0	0	0	0	0	0	0	0	0	0	124,263	100.0	124,263	100.0



PA Public School Employees' Retirement Sys
Sources of Fund Growth
PSERS Total Fund
Quarter Ended 12/31/12

Manager Name	Beginning Value \$(000)	Net Contrib \$(000)	Distrib & Adm Fees \$(000)	Invest Fees \$(000)	Invest Gain/Loss \$(000)	Ending Value \$(000)	Time Wtd Return (%)
PSERS - Misc - Equity	6,332	-20	3	0	46	6,354	0.72
PSERS S&P 500 Index Fund	4,158,896	-994,893	9	0	-13,214	3,150,781	-0.24
PSERS S&P 600 Index Fund	2	-4	0	0	4	2	NA
PSERS JP Morgan 600 Swap	46,695	0	0	0	1,170	47,865	2.51
PSERS JP Morgan 600 Swap II	125,245	0	0	0	3,130	128,375	2.50
PSERS S&P 400 Index Fund	2	170,796	0	0	4,240	175,038	3.48
First Pacific Advisors, Inc.	169,047	-395	0	305	6,566	174,913	3.71
NorthPointe Capital, LLC	68,638	-20,047	0	168	-4,251	44,173	-6.65
AH Lisanti	47,876	0	0	61	-1,467	46,348	-3.19
Conestoga Capital Advisors	50,211	0	0	62	584	50,734	1.04
Hellman Jordan Mgmt	40,173	0	0	57	359	40,475	0.75
Opus Capital Management	49,315	0	0	44	1,953	51,224	3.87
PSERS S&P 400 SWAP I	296,196	-300,259	0	0	4,063	0	NA
Managed Equity	5,058,629	-1,144,820	12	697	3,182	3,916,282	
PSERS Fixed Liquidation	1,717	-400	0	0	305	1,621	NA
Bridgewater TIPS	1,624,732	0	0	4,259	35,806	1,656,279	1.94
PSERS TIPS (unlevered)	1,099,171	-1,764	0	0	11,307	1,108,715	1.03
PSERS TIPS (cash)	297,812	0	0	0	617	298,429	0.21
Black River Inflation Opp. Fund	70,000	0	0	0	5,055	75,055	7.22
MacKay Shields	422,209	-7,206	0	336	12,370	427,036	2.88
TOP NPL (A)	12,677	23,357	0	0	2,339	38,374	8.13
TPG Opp Partners II	18,107	17,869	0	0	945	36,920	3.39



PA Public School Employees' Retirement Sys
Sources of Fund Growth
PSERS Total Fund
Quarter Ended 12/31/12

Manager Name	Beginning Value \$(000)	Net Contrib \$(000)	Distrib & Adm Fees \$(000)	Invest Fees \$(000)	Invest Gain/Loss \$(000)	Ending Value \$(000)	Time Wtd Return (%)
Brevar Howard CMBS Fund	217,464	-3,907	0	0	15,898	229,454	7.37
Apollo European Principle Fund II	14,820	457	0	0	244	15,521	1.92
Carlyle Emerging Mezz. Opp. Fund	41,062	-10,382	0	0	1,123	31,803	2.40
Sankaty Credit Opp. Fund V-A	10,937	24,500	0	0	228	35,665	-0.64
BlackRock Mortgage Investors	524,874	-71,013	0	0	12,398	466,259	2.54
Brigade Distressed Value	107,943	0	0	0	3,242	111,185	3.00
Cerberus Levered Loan Fund I	175,537	-6,547	0	0	4,665	173,654	2.68
Cerberus Levered Loan Fund II	0	175,814	0	0	1,650	177,463	NA
ICG Europe Fund	0	38,328	0	0	-2,892	35,436	NA
LBC Credit Partners	197,373	55,828	8,760	0	6,705	251,146	2.99
Mariner/Galton RMBS	293,264	-42,186	0	905	13,346	263,519	4.51
Oaktree Loan Fund 2X, LP	136,775	-53,413	0	0	-59	83,303	-0.05
Sankaty Middle Market Fund	147,169	3,055	0	0	6,099	156,323	4.09
Sankaty Credit Oppt. Fund IV	356,345	-49,984	0	0	-1,282	305,078	-0.35
Sankaty Advisors Bank Loans	389,248	-25,000	0	0	5,481	369,729	1.47
PSERS U.S. Long Treasuries	18,048	0	0	0	-2,105	15,943	-0.68
BlackRock Global Alpha	600,702	0	0	0	12,361	613,063	2.06
PSERS Active	1,193,083	-11,995	2	0	7,773	1,188,860	0.65
Western Asset Management	266,259	-2,133	3	134	2,847	266,836	1.02
Piedmont Inv. Advisors	52,170	0	0	32	212	52,349	0.34
Pugh Capital Management	91,111	0	0	43	449	91,517	0.45
PIMCO Multi-Sector Strategy	855,559	-230	-230	0	19,466	875,026	2.28
PIMCO Mortgage	51,516	-52,813	0	0	1,297	0	NA



PA Public School Employees' Retirement Sys
Sources of Fund Growth
 PSERS Total Fund
 Quarter Ended 12/31/12

Manager Name	Beginning Value \$(000)	Net Contrib \$(000)	Distrib & Adm Fees \$(000)	Invest Fees \$(000)	Invest Gain/Loss \$(000)	Ending Value \$(000)	Time Wtd Return (%)
Managed Fixed	9,287,685	234	8,534	5,710	177,887	9,451,562	
AQR GRP EL 20 Offshore Fund	0	325,000	0	0	1,456	326,456	NA
Bridgewater All Weather @15	940,646	150,000	0	0	25,791	1,116,436	2.28
Risk Parity	940,646	475,000	0	0	27,246	1,442,892	
PSERS Cash Management	828,852	3,068,785	2,022,689	373	2,799	1,877,373	0.21
PSERS Cash Management Sub	37,805	-12,511	0	0	5	25,298	0.03
Unallocated STIF/Dreyfus	866,656	3,056,274	2,022,689	373	2,803	1,902,672	
Pareto	397	1,231	0	405	1,901	3,124	0.07
Wellington Mgmt.	600	-137	0	0	-25	438	-4.89
Wasatch EM Small Cap	164,933	68,881	0	398	12,992	246,407	6.34
Westwood Global	71,298	0	0	147	4,765	75,916	6.48
PSERS ACWI x US	2,106,955	-485,964	0	0	112,039	1,733,029	5.97
PSERS France Swaps	166,846	-45,209	0	0	18,292	139,929	11.52
PSERS JP Morgan Swaps	45,315	0	0	0	2,576	47,892	5.69
PSERS JP Morgan Swaps III	210,707	-88,185	0	0	7,664	130,186	5.22
PSERS JP Swap 4	144,302	-70,014	0	0	7,609	81,898	5.49
PSERS JP Swap 5	26,272	0	0	0	1,487	27,759	5.66
BTC - Pan Europe	37,806	5,807	0	0	2,026	45,639	4.70
BTC - Japan	3,396	-2,983	0	0	32	444	2.99
BTC - Canada	10,956	957	0	0	103	12,016	0.85



PA Public School Employees' Retirement Sys
Sources of Fund Growth
PSERS Total Fund
Quarter Ended 12/31/12

Manager Name	Beginning Value \$(000)	Net Contrib \$(000)	Distrib & Adm Fees \$(000)	Invest Fees \$(000)	Invest Gain/Loss \$(000)	Ending Value \$(000)	Time Wtd Return (%)
BTC - Pacific Rim Ex-Japan	13,018	1,189	0	0	792	14,999	5.61
BTC - UBS	20,982	-1,023	0	0	1,956	21,916	9.80
BTC - UBS Japan CFD	14,729	4,480	0	0	594	19,803	2.95
BTC - Alpha Advantage Emerging	104,075	0	0	0	7,004	111,080	6.73
BTC - 32 Cap Ltd.	163,999	0	0	0	314	164,313	0.19
BTC - Global Ex-US Equity	44,441	-56,413	0	0	11,704	-269	125.29
BTC - Active Currency Overlay	-2,235	1,924	0	0	-732	-1,044	-100.00
BTC - Money Market EBT	15,448	45,908	0	0	3	61,359	0.08
Baillie Gifford	463,247	-2,269	8	347	24,837	485,459	5.31
Marathon Asset Mgmt.	455,967	-2,141	0	371	23,331	476,787	5.06
Acadian Asset Mgmt	144,118	-1,066	1	176	10,366	153,242	7.12
Batterymarch Int'l Sm Cap	58,825	-363	0	108	3,203	61,556	5.29
Oberweis Asset Mgmt	87,411	-281	0	209	7,304	94,225	8.13
Pyramis	112,446	-583	0	216	6,085	117,731	5.24
Wasatch Advisors	169,582	-935	0	356	9,618	177,909	5.48
PSERS Emerging Markets Fund	100,682	101,161	0	0	6,824	208,667	5.48
Glovista	29,654	0	0	35	2,314	31,932	7.68
John Hsu Capital	73,083	-20,000	0	68	4,370	57,384	6.31
Shah Capital Management	34,745	-5,000	0	0	4,853	34,598	16.25
Batterymarch Mgmt.	19,791	-19,766	6	0	-19	0	NA
PSERS World x-US Sm Swap 1	154,879	-155,684	0	0	805	0	NA
PSERS World x-US Sm Swap 3	72,581	-73,000	0	0	419	0	NA



PA Public School Employees' Retirement Sys
Sources of Fund Growth
PSERS Total Fund
Quarter Ended 12/31/12

Manager Name	Beginning Value \$(000)	Net Contrib \$(000)	Distrib & Adm Fees \$(000)	Invest Fees \$(000)	Invest Gain/Loss \$(000)	Ending Value \$(000)	Time Wtd Return (%)
Int'l Equity	5,341,250	-799,480	16	2,836	297,405	4,836,323	
Alliance Bernstein Global Fixed	308,751	-2,482	1	209	3,583	309,642	1.10
Strategic Fixed Income LLC	153,916	-562	0	49	1,007	154,312	0.63
Franklin Templeton	438,907	-6,663	0	582	16,572	448,235	3.68
Stone Harbor	422,629	-5,324	0	660	13,861	430,506	3.15
Global Fixed Income	1,324,202	-15,031	1	1,499	35,024	1,342,695	
Private Real Estate Composite	6,077,315	231,828	146,491	24,398	199,040	6,337,294	2.84
PTRES Composite	190,635	-1,565	0	0	3,546	192,616	1.88
Real Estate	6,267,950	230,263	146,491	24,398	202,586	6,529,910	
Managed Stock Distribution	4,281	0	0	0	641	4,922	14.98
Private Equity Composite	8,017,674	286,530	224,545	1,127	169,312	8,247,844	2.08
Private Debt Composite	1,724,350	16,424	117,777	0	54,719	1,677,715	3.23
Venture Capital Composite	889,496	25,849	22,595	340	31,900	924,309	3.54
Internally Managed Composite	28,601	7,514	461	14	746	36,386	2.48
Special Investments	10,664,401	336,316	365,379	1,481	257,319	10,891,177	
Credit Suisse	326,317	-363	0	0	-19,631	306,322	-6.02
DB Advisors	379,858	-968	0	814	-4,864	373,212	-1.49
Gresham	522,299	0	0	378	-22,266	499,656	-4.34
PSERS Gold Fund	32,242	0	0	0	-26,084	6,158	-5.70



PA Public School Employees' Retirement Sys
Sources of Fund Growth
PSERS Total Fund
Quarter Ended 12/31/12

Manager Name	Beginning Value \$(000)	Net Contrib \$(000)	Distrib & Adm Fees \$(000)	Invest Fees \$(000)	Invest Gain/Loss \$(000)	Ending Value \$(000)	Time Wtd Return (%)
Schroders Investment Management	512,317	-120	0	947	-29,793	481,457	-6.00
Wellington Management Company	617,637	-1,629	0	1,350	-16,503	598,155	-2.89
Commodities	2,390,669	-3,081	0	3,489	-119,141	2,264,959	
AQR Capital Offshore Multi-Strat.	405,398	0	0	0	13,774	419,172	3.40
BlackRock Global Ascent	505,145	0	0	0	-5,279	499,866	-1.05
BlackRock Capital Structure	248,987	0	0	0	10,749	259,737	4.32
BlueTrend Fund Limited	251,152	0	0	288	-5,388	245,476	-2.26
Boston Co. Microcap (Terminated)	85,225	-81,715	0	0	-1,773	1,737	NA
Brevar Howard Fund Limited	394,988	0	0	0	9,305	404,293	2.36
Bridgewater Pure Alpha	858,286	0	0	0	-903	857,383	-0.11
Brigade Leveraged Capital	700,171	0	0	0	12,291	712,462	1.76
Capula Tail Risk Fund	360,854	0	0	0	-7,914	352,939	-2.19
Capula Global Relative Value	213,559	0	0	0	879	214,438	0.41
FX Concepts	54,575	0	0	1,000	-8,311	45,264	-3.70
Lazard Emerging Mkts Income	122,037	0	0	0	5,232	127,269	4.29
Mariner/Caspian Select Credit	206,633	0	0	0	6,040	212,672	2.92
Nephila/Palmetto Fund	271,871	0	0	0	8,817	280,688	3.24
Pareto Active Currency	12,385	0	0	800	-540	11,045	-0.57
Robeco Transrend Diversified	205,341	0	0	0	-9,325	196,016	-4.54
Black River Fixed Income Rel Val	263,688	0	0	0	4,665	268,352	1.77
Aeolus Property Catastrophe	112,186	100,000	0	0	-606	211,580	-0.62
PIMCO PARS/GCOF/MAV Comp.	664,429	0	0	1,136	9,444	672,737	1.25



PA Public School Employees' Retirement Sys
Sources of Fund Growth
 PSERS Total Fund
 Quarter Ended 12/31/12

Manager Name	Beginning Value \$(000)	Net Contrib \$(000)	Distrib & Adm Fees \$(000)	Invest Fees \$(000)	Invest Gain/Loss \$(000)	Ending Value \$(000)	Time Wtd Return (%)
Denali Advisors	36,819	0	0	46	-1,611	35,162	-4.50
Capula Special Opportunities	0	-180	0	0	180	0	NA
Absolute Return	5,973,728	18,105	0	3,270	39,725	6,028,287	
Non-Core STIF	0	0	0	0	0	0	NA
Miscellaneous Composite	897	-1,453	4	0	1,480	921	NA
Other	897	-1,453	4	0	1,480	921	
Harvest MLP ALpha	378,245	-713	0	750	-962	375,820	-0.45
Harvest Enhanced Index	5,304	0	0	0	-74	5,230	-1.39
Salient Capital Partners	207,701	49,865	0	201	2,882	260,247	1.25
Altantic Trust Private Wealth	203,907	49,895	0	70	-1,116	252,615	-0.45
Managed MLP	795,157	99,047	0	1,021	730	893,913	
PSERS Total Fund	48,911,869	2,251,374	2,543,126	44,774	926,250	49,501,592	1.82

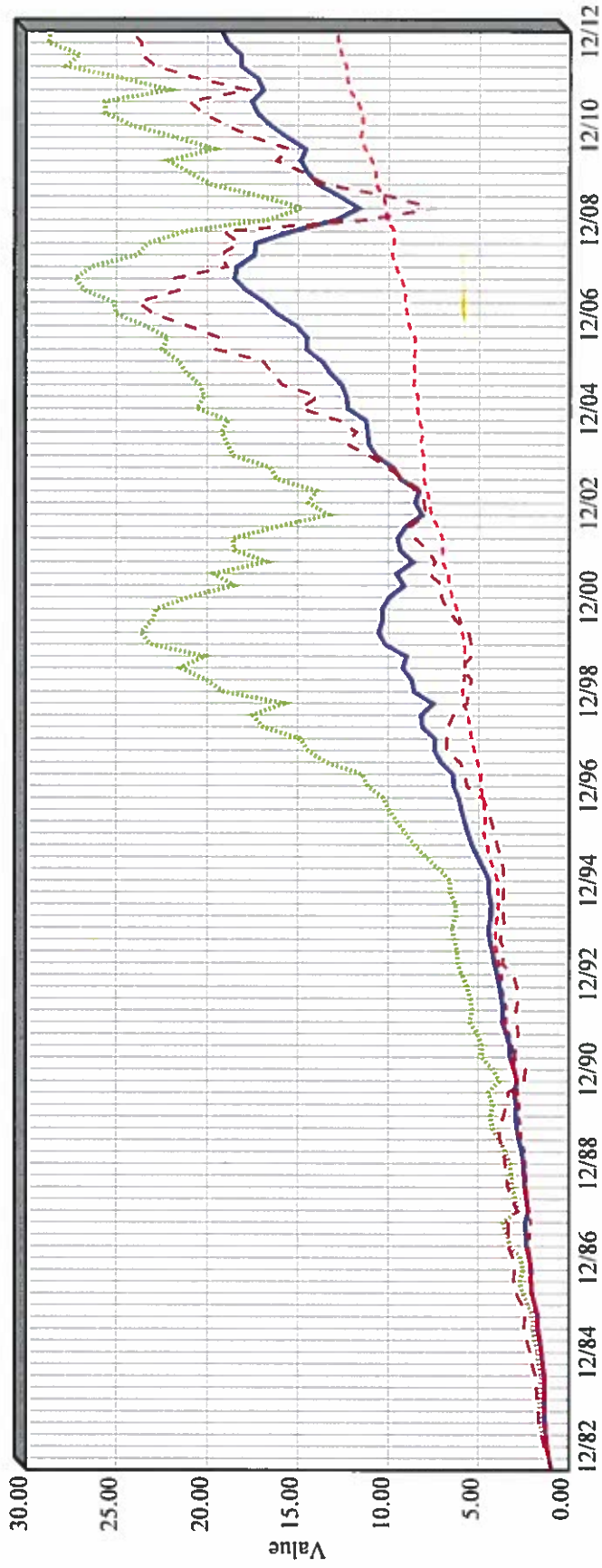


PA Public School Employees' Retirement Sys
 Sources of Fund Growth
 PSERS Healthcare & HOP
 Quarter Ended 12/31/12

Manager Name	Beginning Value \$(000)	Net Contrib \$(000)	Distrib & Adm Fees \$(000)	Invest Fees \$(000)	Invest Gain/Loss \$(000)	Ending Value \$(000)	Time Wtd Return (%)
PSERS Healthcare - Premium Assist	39,265	-3,398	0	0	52	35,919	0.12
PSERS Healthcare - HOP	88,282	17,180	17,180	0	63	88,345	0.07
PSERS Healthcare & HOP	127,547	13,782	17,180	0	115	124,263	0.08



PA Public School Employees' Retirement Sys
 Growth of One Dollar
 PSERS Total Fund
 Quarter Ended 12/31/2



	Legend	Return		\$ Value
		3 Years	Inception 6/30/82	
Total	—	9.90	10.18	19.22
S&P 500 (Official)	...	10.87	11.63	28.65
Barclays Aggregate	- - -	6.19	8.73	12.86
Wilshire Real Est. Secs	- - -	18.11	11.01	24.22



PA Public School Employees' Retirement Sys
 Fund Return Table
 Quarter Ended 12/31/12

Manager	1 Quarter	2 Quarters	3 Quarters	1 Year	3 Years	5 Years	Since 12/31/02	Inception Date	Inception Return
PSERS S&P 500 Composite									
Gross of Fee Return	-0.24	6.16	3.14	16.09	11.18	2.14	7.38	9/30/83	10.42
Net of Fee Return	-0.24	6.16	3.14	16.09	11.18	2.14	7.38	9/30/83	10.42
Published S&P 500 Index	-0.38	5.95	3.03	16.00	10.87	1.66	7.10	9/30/83	10.34
Hellman Jordan Mgmt									
Gross of Fee Return	0.90	8.12	3.48	18.66	10.18			6/30/09	15.23
Net of Fee Return	0.75	7.88	3.15	18.19	9.70			6/30/09	14.76
S&P 500/Citigroup Growth Index	-2.04	4.24	2.10	14.62	11.33			6/30/09	16.15
Total US Large Cap Composite									
Gross of Fee Return	-0.22	6.19	3.15	16.10	11.19	0.70	6.63	6/30/82	11.27
Net of Fee Return	-0.22	6.18	3.15	16.10	11.18	0.67	6.58	6/30/97	4.29
Published S&P 500 Index	-0.38	5.95	3.03	16.00	10.87	1.66	7.10	6/30/97	5.01
MSCI USA Large Cap Index	-1.04	5.17	2.31	15.17	9.79	0.89			
PSERS S&P 400 Composite									
Gross of Fee Return	3.48	9.53	4.36	18.78	14.20	6.14	11.11	6/30/98	9.29
Net of Fee Return	3.48	9.53	4.36	18.78	14.20	6.14	11.11	6/30/98	9.29
Published S&P 400	3.61	9.25	3.86	17.88	13.62	5.15	10.53	6/30/98	8.85
PSERS S&P 600 Composite									
Gross of Fee Return	2.50	8.45	4.80	17.69	15.10	6.50	11.19	12/31/94	11.08
Net of Fee Return	2.50	8.45	4.80	17.69	15.10	6.50	11.19	12/31/94	11.08
Published S&P 600	2.22	7.73	3.87	16.33	14.07	5.14	10.45	12/31/94	10.50



PA Public School Employees' Retirement Sys
 Fund Return Table
 Quarter Ended 12/31/12

Manager	1 Quarter	2 Quarters	3 Quarters	1 Year	3 Years	5 Years	Since 12/31/02	Inception Date	Inception Return
PSERS Small Index Composite									
Gross of Fee Return	3.16	9.11	4.64	18.36	14.63	6.14	11.04	6/30/92	11.75
Net of Fee Return	3.16	9.11	4.64	18.36	14.63	6.14	11.04	6/30/92	11.75
First Pacific Advisors, Inc.									
Gross of Fee Return	3.90	13.07	1.96	10.92	10.94	7.52	11.32	9/30/91	15.11
Net of Fee Return	3.71	12.73	1.51	10.31	10.34	6.95	10.74	6/30/97	10.68
Russell 2500 Value Index	4.15	10.24	6.90	19.22	12.88	4.55	10.20	6/30/97	8.68
Barclays Universal Index	0.58	2.59	4.64	5.53	6.69	6.19	5.59	6/30/97	6.32
Blended Benchmark (FPA)	2.47	7.25	4.46	14.85	12.22	4.26	10.05	6/30/97	8.58
Opus Capital Management									
Gross of Fee Return	3.96	9.47	2.34	12.35	12.46	5.20		12/31/04	5.08
Net of Fee Return	3.87	9.30	2.10	11.95	12.02	4.73		12/31/04	4.56
MSCI USA Small Cap Value	3.42	8.90	5.48	18.67	12.33	5.49		12/31/04	5.51
Russell 2000 Value	3.23	9.07	5.79	18.05	11.58	3.54		12/31/04	4.18
Blended Benchmark (Opus)	3.42	8.90	5.48	18.67	12.32	3.96		12/31/04	4.44
US Small Cap Value Composite									
Gross of Fee Return	3.91	12.22	2.00	11.89	11.26	6.46	10.65	6/30/90	12.79
Net of Fee Return	3.75	11.92	1.60	11.30	10.67	5.89	10.07	6/30/97	8.47
MSCI USA Small Cap Value	3.42	8.90	5.48	18.67	12.33	5.49	10.16	6/30/97	7.99



PA Public School Employees' Retirement Sys
 Fund Return Table
 Quarter Ended 12/31/12

Manager	1 Quarter	2 Quarters	3 Quarters	1 Year	3 Years	5 Years	Since 12/31/02	Inception Date	Inception Return
AH Lisanti									
Gross of Fee Return	-3.06	1.10	-0.74	14.75	14.61			9/30/08	11.49
Net of Fee Return	-3.19	0.87	-1.06	14.28	14.16			9/30/08	11.06
MSCI USA Small Cap Growth	1.76	7.38	1.72	16.35	13.78			9/30/08	10.29
Russell 2000 Growth	0.45	5.31	1.16	14.59	12.81			9/30/08	8.26
Blended Benchmark (AH Lisanti)	1.76	7.38	1.72	16.35	12.92			9/30/08	8.33
US Small Cap Growth Composite									
Gross of Fee Return	-3.06	1.10	-0.74	14.75	14.61			9/30/08	11.41
Net of Fee Return	-3.19	0.87	-1.06	14.28	14.16			9/30/08	10.98
MSCI USA Small Cap Growth	1.76	7.38	1.72	16.35	13.78			9/30/08	10.29
Conestoga Capital Advisors									
Gross of Fee Return	1.17	2.60	2.50	12.69	14.54	7.17		12/31/04	7.47
Net of Fee Return	1.04	2.37	2.16	12.20	14.06	6.71		12/31/04	7.02
MSCI USA Small Cap Index	2.59	8.14	3.62	17.52	13.11	5.13		12/31/04	5.17
Russell 2000	1.85	7.19	3.47	16.34	12.25	3.55		12/31/04	4.76
Blended Benchmark (Conestoga)	2.59	8.14	3.62	17.52	12.67	3.79		12/31/04	4.91
US Small Cap Core Composite									
Gross of Fee Return	1.17	2.60	1.65	8.11	18.21	11.93		12/31/04	10.43
Net of Fee Return	1.04	2.37	1.33	7.61	17.57	11.35		12/31/04	9.90
MSCI USA Small Cap Index	2.59	8.14	3.62	17.52	13.11	5.13		12/31/04	5.17



PA Public School Employees' Retirement Sys
 Fund Return Table
 Quarter Ended 12/31/12

Manager	1 Quarter	2 Quarters	3 Quarters	1 Year	3 Years	5 Years	Since 12/31/02	Inception Date	Inception Return
US Small Cap Active Composite									
Gross of Fee Return	2.42	8.90	3.18	14.17	12.14	4.64	10.43	6/30/90	12.69
Net of Fee Return	2.27	8.62	2.81	13.61	11.57	4.06	9.86	6/30/97	7.94
Total US Small Cap X Micro Composite									
Gross of Fee Return	2.96	9.19	4.03	16.25	13.62	5.76	10.87	6/30/90	12.87
Net of Fee Return	2.89	9.06	3.84	15.99	13.42	5.51	10.64	6/30/97	9.42
MSCI USA SMID Index	2.64	8.43	3.17	16.82	13.02	3.79	10.32	6/30/97	7.65
MSCI USA Small Cap Index	2.59	8.14	3.62	17.52	13.11	5.13	10.58		
NorthPointe Capital, LLC									
Gross of Fee Return	-6.41	-5.34	-12.27	5.16	12.11	0.82		12/31/04	2.47
Net of Fee Return	-6.65	-5.83	-13.16	4.09	11.00	-0.23		12/31/04	1.43
MSCI US Microcap Index	-1.60	6.58	5.17	25.07	15.36	5.17		12/31/04	4.59
Blended Benchmark (NPC)	-1.60	6.58	5.17	25.07	15.36	4.56		12/31/04	3.62
US Micro Cap Composite									
Gross of Fee Return	-6.41	-5.34	-12.25	5.12	7.00	-0.54		12/31/04	2.36
Net of Fee Return	-6.65	-5.83	-13.14	4.05	5.81	-1.66		12/31/04	1.30
MSCI US Microcap Index	-1.60	6.58	5.17	25.07	15.36	5.17		12/31/04	4.59
Blended Policy (US Micro)	-1.60	6.58	5.17	25.07	15.36	4.56		12/31/04	3.81



PA Public School Employees' Retirement Sys
 Fund Return Table
 Quarter Ended 12/31/12

Manager	1 Quarter	2 Quarters	3 Quarters	1 Year	3 Years	5 Years	Since 12/31/02	Inception Date	Inception Return
Total US Small Cap Composite									
Gross of Fee Return	2.21	8.06	2.77	15.39	13.12	5.27	10.59	6/30/90	12.74
Net of Fee Return	2.13	7.91	2.54	15.08	12.81	4.92	10.27	6/30/97	9.19
MSCI USA Small Cap Index	2.59	8.14	3.62	17.52	13.11	5.13	10.58		
MSCI USA SMID Index	2.64	8.43	3.17	16.82	13.02	3.79	10.32	6/30/97	7.65
Wilshire 4500 Index	3.07	8.48	3.31	17.99	13.27	3.95	10.67	6/30/97	7.10
Published S&P 400 Index	3.61	9.25	3.86	17.88	13.62	5.15	10.53	6/30/97	9.94
Published S&P 600 Index	2.22	7.73	3.87	16.33	14.07	5.14	10.45	6/30/97	8.28
Total US Equity Composite									
Gross of Fee Return	0.26	6.58	3.06	15.72	11.73	1.85	7.65	12/31/99	3.46
Net of Fee Return	0.24	6.55	3.01	15.65	11.64	1.75	7.54	12/31/99	3.35
MSCI USA IMI	-0.03	6.06	2.54	15.62	10.68	1.65	7.31	12/31/99	2.97
Wilshire 5000 Index	0.10	6.26	2.93	16.06	11.15	2.03	7.85	12/31/99	2.26
Blended Policy (Tot US Eq)	-0.03	6.06	2.54	15.62	10.68	1.76	7.71	12/31/99	2.15
PSERS ACWI x US Index Fund									
Gross of Fee Return	5.99	13.96	5.45	17.58	4.57	-2.08	10.07	3/31/97	5.73
Net of Fee Return	5.99	13.96	5.44	17.57	4.56	-2.09	10.06	3/31/97	5.72
MSCI ACWI/EAFE Index Blend (N)	5.85	13.68	5.03	16.83	3.87	-2.89	9.51	3/31/97	5.17
Baillie Gifford									
Gross of Fee Return	5.38	14.92	7.73	22.27	8.17	0.52	13.16	6/30/02	10.75
Net of Fee Return	5.31	14.74	7.22	21.61	7.64	0.09	12.78	6/30/02	10.39

PA Public School Employees' Retirement Sys
Fund Return Table
Quarter Ended 12/31/12

Manager	1 Quarter	2 Quarters	3 Quarters	1 Year	3 Years	5 Years	Since 12/31/02	Inception Date	Inception Return
BlackRock Global Composite									
Gross of Fee Return	5.58	14.87	7.84	22.91	13.14	1.47		9/30/04	9.80
Net of Fee Return	5.58	14.24	7.08	21.84	12.26	0.79		9/30/04	9.19
Marathon Asset Mgmt.									
Gross of Fee Return	5.14	12.61	6.48	19.21	8.61	0.87	13.21	9/30/90	10.46
Net of Fee Return	5.06	12.43	6.21	18.82	8.24	0.51	12.86	6/30/97	8.79
John Hsu Capital									
Gross of Fee Return	6.41	12.05	1.49	15.99	4.20	-1.41	12.16	3/31/98	6.64
Net of Fee Return	6.31	11.84	1.20	15.55	3.80	-1.79	11.72	3/31/98	6.20
MSCI World Index (N)	2.49	9.36	3.82	15.82	6.93	-1.18	7.51	3/31/98	3.33
Shah Capital Management									
Gross of Fee Return	16.25	13.13	-7.21	2.90	-13.40	-1.41		6/30/06	2.45
Net of Fee Return	16.25	13.13	-7.21	2.90	-13.40	-1.44		6/30/06	2.33
MSCI World (N)	2.49	9.36	3.82	15.82	6.93	-1.18		6/30/06	2.35
1 Mo LIBOR (lag)	0.05	0.11	0.17	0.23	0.25	0.79			
Blended Benchmark (Shah)	1.27	4.70	2.08	8.01	3.98	-0.55		6/30/06	2.86
Active Non-US Lg Cap Comp									
Gross of Fee Return	5.64	13.94	6.56	20.28	8.71	-0.28	11.05	6/30/92	8.40
Net of Fee Return	5.59	13.64	6.08	19.62	8.14	-0.74	10.65	6/30/97	6.29



PA Public School Employees' Retirement Sys
 Fund Return Table
 Quarter Ended 12/31/12

Manager	1 Quarter	2 Quarters	3 Quarters	1 Year	3 Years	5 Years	Since 12/31/02	Inception Date	Inception Return
Non-US Lg Cap Eq Comp									
Gross of Fee Return	5.92	14.00	5.79	18.32	5.58	-1.74	10.34	9/30/89	6.93
Net of Fee Return	5.90	13.90	5.64	18.12	5.43	-1.89	10.13	6/30/97	5.90
MSCI ACWI ex-US Index (N)	5.85	13.68	5.03	16.83	3.87	-2.89	9.74		
MSCI ACWI ex-US Index (G)	5.89	13.83	5.43	17.39	4.33	-2.44	-10.22	6/30/97	4.88
Blended Policy (Non-US Large)	5.85	13.68	5.03	16.83	3.87	-2.82	10.00	6/30/97	4.93
Acadian Asset Mgmt									
Gross of Fee Return	7.25	17.84	7.18	25.73	9.95	-0.94		6/30/05	10.43
Net of Fee Return	7.12	17.55	6.78	25.11	9.40	-1.45		6/30/05	9.91
MSCI ACWI ex-US Sm Cap Idx (N)	4.90	13.86	3.70	18.52	6.54	-0.39		6/30/05	6.80
Blended Benchmark (Acadian)	4.90	13.86	3.70	18.52	6.54	-0.12		6/30/05	7.62
Batterymarch Int'l Sm Cap									
Gross of Fee Return	5.48	15.42	6.32	22.64	11.48			6/30/08	3.30
Net of Fee Return	5.29	14.99	5.70	21.71	10.57			6/30/08	2.51
MSCI ACWI ex-US Sm Cap Idx (N)	4.90	13.86	3.70	18.52	6.54			6/30/08	2.53
Oberweis Asset Mgmt									
Gross of Fee Return	8.37	24.05	12.42	33.23	15.01			6/30/08	1.65
Net of Fee Return	8.13	23.47	11.60	31.95	13.87			6/30/08	0.63
MSCI ACWI ex-US Sm Cap Idx (N)	4.90	13.86	3.70	18.52	6.54			6/30/08	2.53
Pyramis									
Gross of Fee Return	5.44	16.28	5.74	23.79	8.34			9/30/08	11.72
Net of Fee Return	5.24	15.83	4.90	22.81	7.46			9/30/08	10.86
MSCI ACWI ex-US Sm Cap Idx (N)	4.90	13.86	3.70	18.52	6.54			9/30/08	9.97



PA Public School Employees' Retirement Sys
 Fund Return Table
 Quarter Ended 12/31/12

Manager	1 Quarter	2 Quarters	3 Quarters	1 Year	3 Years	5 Years	Since 12/31/02	Inception Date	Inception Return
Wasatch Advisors									
Gross of Fee Return	5.70	18.98	14.59	34.56	16.74	5.62		9/30/05	10.16
Net of Fee Return	5.48	18.47	13.84	33.41	15.73	4.65		9/30/05	9.22
MSCI ACWI ex-US Sm Cap Idx (N)	4.90	13.86	3.70	18.52	6.54	-0.39		9/30/05	5.48
Blended Benchmark (Wasatch)	4.90	13.86	3.70	18.52	6.54	-0.12		9/30/05	6.32
Active Non-US Sm Cap Comp									
Gross of Fee Return	6.42	18.54	9.67	28.61	12.62	1.13		6/30/05	8.65
Net of Fee Return	6.23	18.09	9.00	27.64	11.71	0.33		6/30/05	7.89
MSCI ACWI ex-US Sm Cap Idx (N)	4.90	13.86	3.70	18.52	6.54	-0.39		6/30/05	6.80
Blended Policy (Act Non-US Sm)	4.90	13.86	3.70	18.52	6.54	-0.12		6/30/05	7.62
Non-US Small Cap Equity Composite									
Gross of Fee Return	6.24	17.59	8.28	25.91	11.78	0.68		6/30/05	8.32
Net of Fee Return	6.05	17.22	7.75	25.17	11.07	-0.01		6/30/05	7.64
MSCI ACWI ex-US Sm Cap Idx (N)	4.90	13.86	3.70	18.52	6.54	-0.39		6/30/05	6.80
Total Non-U.S. Developed Equity Comp.									
Gross of Fee Return	5.98	14.56	6.18	19.33	6.40	-1.40	10.53	9/30/89	7.01
Net of Fee Return	5.94	14.42	5.99	19.07	6.18	-1.62	10.28	6/30/97	6.00
MSCI ACWI ex-US Index (N)	5.85	13.68	5.03	16.83	3.87	-2.89	9.74		



PA Public School Employees' Retirement Sys
 Fund Return Table
 Quarter Ended 12/31/12

Manager	1 Quarter	2 Quarters	3 Quarters	1 Year	3 Years	5 Years	Since 12/31/02	Inception Date	Inception Return
PSERS Emerging Markets Fund									
Gross of Fee Return	5.48							9/30/12	5.48
Net of Fee Return	5.48							9/30/12	5.48
MSCI EM Index (N)	5.58							9/30/12	5.58
Passive Emerging Markets Composite									
Gross of Fee Return	5.48							9/30/12	5.48
Net of Fee Return	5.48							9/30/12	5.48
MSCI EM Index (N)	5.58							9/30/12	5.58
Wasatch EM Small Cap									
Gross of Fee Return	6.60	15.25	9.05	29.31	17.94			6/30/08	15.30
Net of Fee Return	6.34	14.68	8.24	28.06	16.77			6/30/08	14.21
MSCI EM Small Cap Index	5.10	13.94	4.79	22.22	4.21			6/30/08	5.92
Wellington Mgmt.									
Gross of Fee Return	-4.89	1.99	-8.48	5.54	-1.29	-4.18		6/30/06	6.13
Net of Fee Return	-4.89	1.79	-8.87	4.91	-2.16	-5.05		6/30/06	5.28

PA Public School Employees' Retirement Sys
 Fund Return Table
 Quarter Ended 12/31/12

Manager	1 Quarter	2 Quarters	3 Quarters	1 Year	3 Years	5 Years	Since 12/31/02	Inception Date	Inception Return
Westwood Global									
Gross of Fee Return	6.70	14.34	6.41	19.43	10.21			9/30/09	11.44
Net of Fee Return	6.48	13.86	5.73	18.43	9.29			9/30/09	10.54
MSCI EM Index (N)	5.58	13.75	3.63	18.22	4.66			9/30/09	6.96
Glovista									
Gross of Fee Return	7.81	14.20	4.99	20.62				9/30/11	21.86
Net of Fee Return	7.68	14.06	4.79	20.34				9/30/11	21.63
MSCI EM Index (N)	5.58	13.75	3.63	18.22				9/30/11	18.36
Active Emerg Mrkts Comp									
Gross of Fee Return	6.61	14.97	6.09	22.36	6.32	-0.09	16.81	3/31/97	7.86
Net of Fee Return	6.38	14.49	5.41	21.32	5.18	-1.11	15.79	6/30/97	6.45
MSCI EM Index (N)	5.58	13.75	3.63	18.22	4.66	-0.92	16.52	6/30/97	6.67
MSCI EM Index (G)	5.61	13.93	3.93	18.62	4.98	-0.61	16.88	6/30/97	6.94
Blended Policy (EM)	5.58	13.75	3.63	18.22	4.66	-0.89	16.72	6/30/97	6.84
Emerging Markets Composite									
Gross of Fee Return	6.35	14.63	5.77	21.99	6.22	-0.16	16.77	3/31/97	7.84
Net of Fee Return	6.18	14.21	5.15	21.03	5.20	-1.10	15.80	6/30/98	10.22
MSCI EM Index (N)	5.58	13.75	3.63	18.22	4.66	-0.92	16.52	6/30/98	10.87
MSCI EM Index (G)	5.61	13.93	3.93	18.62	4.98	-0.61	16.88	6/30/98	11.17
Blended Policy (EM)	5.58	13.75	3.63	18.22	4.66	-0.89	16.72	6/30/98	11.06



PA Public School Employees' Retirement Sys
 Fund Return Table
 Quarter Ended 12/31/12

Manager	1 Quarter	2 Quarters	3 Quarters	1 Year	3 Years	5 Years	Since 12/31/02	Inception Date	Inception Return
Pareto									
Gross of Fee Return	0.09	-0.42	-1.02	-1.38	0.04	1.05		6/30/06	-0.02
Net of Fee Return	0.07	-0.46	-1.08	-1.46	-0.03	0.97		6/30/06	-0.08
Currency Hedge Composite									
Gross of Fee Return	0.09	-0.42	-1.02	-1.38	0.04	1.05		6/30/06	-0.02
Net of Fee Return	0.07	-0.46	-1.08	-1.46	-0.03	0.97		6/30/06	-0.08
PSERS Currency Hedge Bnmk	0.00	0.00	0.00	0.00	0.00	1.68		6/30/06	0.35
Total Non-US Equity Composite									
Gross of Fee Return	6.05	14.41	5.78	19.01	6.36	-0.14	11.60	9/30/99	6.45
Net of Fee Return	6.00	14.24	5.54	18.66	6.05	-0.45	11.27	9/30/99	6.15
MSCI-AC World Ex US IMI (\$N)	5.73	13.70	4.87	17.03	4.18	-2.59	10.13	9/30/99	4.85
Blended Policy (Ttl Non-US Eq)	5.73	13.70	4.87	17.03	4.18	-1.76	10.31	9/30/99	4.71
Total Equity Composite									
Gross of Fee Return	3.28	10.63	4.48	17.43	8.66	0.80	9.05	3/31/92	8.83
Net of Fee Return	3.24	10.52	4.33	17.21	8.45	0.59	8.84	6/30/97	6.09
MSCI AC World IMI Index (N)	2.99	10.04	3.79	16.38	7.02	-0.73	8.59	6/30/97	4.65
MSCI ACWI with USA Gross IMI (N)	3.09	10.22	4.04	16.75	7.31	-0.45	8.90		
Blended Policy (Total Eq)	3.09	10.22	4.04	16.75	7.16	-0.02	8.42	6/30/97	5.23



PA Public School Employees' Retirement Sys
 Fund Return Table
 Quarter Ended 12/31/12

Manager	1 Quarter	2 Quarters	3 Quarters	1 Year	3 Years	5 Years	Since 12/31/02	Inception Date	Inception Return
BlackRock Global Alpha									
Gross of Fee Return	2.06	6.45	10.60	12.05	12.29	10.01		6/30/07	9.86
Net of Fee Return	2.06	6.45	10.60	12.05	12.29	10.01		6/30/07	9.86
Barclays Universal	0.58	2.59	4.64	5.53	6.69	6.19		6/30/07	6.62
PSERS Active									
Gross of Fee Return	0.65	2.44	5.09	5.78	7.88	8.03	6.57	3/31/98	7.10
Net of Fee Return	0.65	2.44	5.09	5.78	7.88	8.03	6.57	3/31/98	7.10
Barclays Aggregate Index	0.21	1.80	3.90	4.22	6.19	5.95	5.18	3/31/98	5.96
Western Asset Management									
Gross of Fee Return	1.07	4.59	6.97	9.34	9.39	7.15		6/30/05	6.07
Net of Fee Return	1.02	4.49	6.81	9.13	9.17	6.95		6/30/05	5.89
Blended Policy Benchmark	0.58	2.59	4.64	5.53	6.69	6.19		6/30/05	5.54
Piedmont Inv. Advisors									
Gross of Fee Return	0.41	2.80	5.13	6.33	7.38	6.84		12/31/04	5.95
Net of Fee Return	0.34	2.67	4.93	6.07	7.13	6.59		12/31/04	5.70
Barclays Aggregate Index	0.21	1.80	3.90	4.22	6.19	5.95		12/31/04	5.43
Pugh Capital Management									
Gross of Fee Return	0.49	2.45	4.55	5.72	7.14	7.19		6/30/06	7.42
Net of Fee Return	0.45	2.35	4.41	5.52	6.92	6.97		6/30/06	7.19
Barclays Aggregate Index	0.21	1.80	3.90	4.22	6.19	5.95		6/30/06	6.44
US Core Plus FI Composite									
Gross of Fee Return	1.07	3.74	6.86	8.11	9.27	7.20	6.16	12/31/83	8.79
Net of Fee Return	1.07	3.72	6.82	8.06	9.20	7.12	6.08	6/30/87	7.85
Barclays Universal	0.58	2.59	4.64	5.53	6.69	6.19	5.59		
Barclays Aggregate	0.21	1.80	3.90	4.22	6.13	5.86	5.43		
Blended Policy (US Core+FI)	0.21	1.80	3.90	4.22	6.13	5.86	5.43		



PA Public School Employees' Retirement Sys
 Fund Return Table
 Quarter Ended 12/31/12

Manager	1 Quarter	2 Quarters	3 Quarters	1 Year	3 Years	5 Years	Since 12/31/02	Inception Date	Inception Return
Alliance Bernstein Global Fixed									
Gross of Fee Return	1.17	6.09	5.23	7.57				12/31/11	7.57
Net of Fee Return	1.10	5.91	4.97	7.30				12/31/11	7.30
Strategic Fixed Income LLC									
Gross of Fee Return	0.66							9/30/12	0.66
Net of Fee Return	0.63							9/30/12	0.63
Barclays Global Agg GDP Weighted	0.61							9/30/12	0.61
Non-U.S. Developed Mkts. FI Composite									
Gross of Fee Return	1.00	5.68	5.43	7.43	6.76	7.18	7.13	6/30/92	7.12
Net of Fee Return	0.94	5.53	5.18	7.16	6.51	6.94	6.94	6/30/97	6.35
Barclays Multiverse Index	-0.29	3.08	3.71	4.84	5.41	5.60	6.18		
Barclays GlobalAgg GDP Weighted	0.61	5.10	4.04	6.69					
Blended Policy (Active Global)	0.61	5.10	4.04	6.69	5.67	5.75	6.26		
Franklin Templeton									
Gross of Fee Return	3.81	11.30	11.09	19.63	12.13			9/30/08	13.29
Net of Fee Return	3.68	11.00	10.64	18.99	11.48			9/30/08	12.67
8% Annualized Return	1.94	3.92	5.94	8.00	8.00			9/30/08	8.00
Barclays Emerging Mkt 10% Countr	4.20	9.39	8.02	16.01	9.49			9/30/08	9.19
Blended Benchmark (Franklin)	4.20	11.22	12.67	19.61	11.52			9/30/08	10.47



PA Public School Employees' Retirement Sys
Fund Return Table
Quarter Ended 12/31/12

Manager	1 Quarter	2 Quarters	3 Quarters	1 Year	3 Years	5 Years	Since 12/31/02	Inception Date	Inception Return
Stone Harbor									
Gross of Fee Return	3.31	8.47	7.30	15.34				3/31/10	9.72
Net of Fee Return	3.15	8.13	6.78	14.61				3/31/10	9.09
Barclays Emerging Mkt 10% Countr	4.20	9.39	8.02	16.01				3/31/10	8.43
JP Morgan GBI EM Global Diversif	4.14	9.14	7.82	16.76				3/31/10	8.72
Emerging Markets FI Composite									
Gross of Fee Return	3.57	9.89	9.20	17.50				3/31/10	10.11
Net of Fee Return	3.42	9.58	8.72	16.81				3/31/10	9.51
JP Morgan GBI EM Global Diversif	4.14	9.14	7.82	16.76				3/31/10	8.72
Barclays Emerging Mkt 10% Countr	4.20	9.39	8.02	16.01					
Blended Policy (EM FI)	4.20	9.39	8.02	16.01				3/31/10	8.57
Global Fixed Income Composite									
Gross of Fee Return	1.67	5.46						6/30/12	5.46
Net of Fee Return	1.62	5.36						6/30/12	5.36
Blended Policy (Global FI)	1.26	4.09						6/30/12	4.09
PSERS U.S. Long Treasuries									
Gross of Fee Return	-0.68	0.51						6/30/12	0.51
Net of Fee Return	-0.68	0.51						6/30/12	0.51
Barclays Long Treasury	-0.77	-0.57						6/30/12	-0.57
U.S. Long Treasuries Composite									
Gross of Fee Return	-0.68	0.51						6/30/12	0.51
Net of Fee Return	-0.68	0.51						6/30/12	0.51
Barclays Long Treasury	-0.77	-0.57						6/30/12	-0.57

*Please note the PSERS U.S. Long Treasuries Fund has a 4Q2012 levered return of (11.67) and an unlevered return of (0.68). All respective composites are incorporating the levered return.



PA Public School Employees' Retirement Sys
 Fund Return Table
 Quarter Ended 12/31/12

Manager	1 Quarter	2 Quarters	3 Quarters	1 Year	3 Years	5 Years	Since 12/31/02	Inception Date	Inception Return
Apollo European Principle Fund II									
Gross of Fee Return	1.92							9/30/12	1.92
Net of Fee Return	1.92							9/30/12	1.92
Barclays High Yield	3.29							9/30/12	3.29
Carlyle Emerging Mezz. Opp. Fund LP									
Gross of Fee Return	2.40							9/30/12	2.40
Net of Fee Return	2.40							9/30/12	2.40
Barclays High Yield	3.29							9/30/12	3.29
MacKay Shields									
Gross of Fee Return	2.96	7.28	9.41	14.35	11.56	9.42	11.62	9/30/99	9.39
Net of Fee Return	2.88	7.11	9.06	13.99	11.19	9.06	11.24	9/30/99	9.02
Barclays High Yield	3.29	7.97	9.95	15.81	11.86	10.33	10.62	9/30/99	7.86
TOP NPL (A)									
Gross of Fee Return	8.13	9.21	10.49					3/31/12	10.49
Net of Fee Return	8.13	9.21	10.49					3/31/12	10.49
Barclays High Yield	3.29	7.97	9.95					3/31/12	9.95
TPG Opp Partners II									
Gross of Fee Return	3.39	1.65	-1.67					3/31/12	-1.67
Net of Fee Return	3.39	1.65	-1.67					3/31/12	-1.67
Barclays High Yield	3.29	7.97	9.95					3/31/12	9.95
Brevan Howard CMBS Fund									
Gross of Fee Return	7.37	13.06						6/30/12	13.06
Net of Fee Return	7.37	13.06						6/30/12	13.06



PA Public School Employees' Retirement Sys
 Fund Return Table
 Quarter Ended 12/31/12

Manager	1 Quarter	2 Quarters	3 Quarters	1 Year	3 Years	5 Years	Since 12/31/02	Inception Date	Inception Return
BlackRock Mortgage Investors									
Gross of Fee Return	2.54	15.26	16.47	28.37	16.97			3/31/08	8.86
Net of Fee Return	2.54	15.26	16.47	28.37	16.97			3/31/08	8.86
Barclays High Yield	3.29	7.97	9.95	15.81	11.86			3/31/08	11.62
Brigade Distressed Value									
Gross of Fee Return	3.00	6.93	8.06	10.71				9/30/11	8.85
Net of Fee Return	3.00	6.93	8.06	10.71				9/30/11	8.85
Cerberus Levered Loan Fund I									
Gross of Fee Return	2.68	5.85	8.89	12.20				12/31/11	12.20
Net of Fee Return	2.68	5.85	8.89	12.20				12/31/11	12.20
Cerberus Levered Loan Fund II									
Gross of Fee Return									
Net of Fee Return									
Barclays High Yield									
ICG Europe Fund									
Gross of Fee Return	2.99	13.92	19.14	29.31	9.62			12/31/08	5.27
Net of Fee Return	2.99	13.92	19.14	29.31	9.62			12/31/08	5.27
Barclays High Yield	3.29	7.97	9.95	15.81	11.86			12/31/08	21.98
LBC Credit Partners									
Gross of Fee Return									
Net of Fee Return									
Barclays High Yield									



PA Public School Employees' Retirement Sys
 Fund Return Table
 Quarter Ended 12/31/12

Manager	1 Quarter	2 Quarters	3 Quarters	1 Year	3 Years	5 Years	Since 12/31/02	Inception Date	Inception Return
Mariner/Galton RMBS									
Gross of Fee Return	4.83	15.16	19.16	25.42				6/30/10	13.78
Net of Fee Return	4.51	14.81	18.50	24.44				6/30/10	12.48
7.5% Annualized Return	1.82	3.68	5.57	7.50				6/30/10	7.50
USSWAP5 Index	2.46	4.85	8.07	11.75				6/30/10	18.60
USSWAP5 Index Plus 2%	2.96	5.88	9.67	13.96				6/30/10	20.94
Oaktree Loan Fund 2X, LP									
Gross of Fee Return	-0.05	4.73	9.54	12.69	10.87	9.11		12/31/07	9.11
Net of Fee Return	-0.05	4.73	9.54	12.69	10.87	9.11		12/31/07	9.11
Barclays High Yield	3.29	7.97	9.95	15.81	11.86	10.33		12/31/07	10.33
Sankaty Credit Oppt. Fund IV									
Gross of Fee Return	-0.35	2.45	2.24	6.47	6.89			9/30/08	12.06
Net of Fee Return	-0.35	2.45	2.24	6.47	6.89			9/30/08	12.06
Barclays High Yield	3.29	7.97	9.95	15.81	11.86			9/30/08	15.11
Sankaty Advisors Bank Loans									
Gross of Fee Return	1.47	5.12	5.16	10.67	8.86			6/30/09	10.86
Net of Fee Return	1.47	5.12	5.16	10.67	8.86			6/30/09	10.86
Barclays High Yield	3.29	7.97	9.95	15.81	11.86			6/30/09	16.32
Sankaty Middle Market Fund									
Gross of Fee Return	4.09	11.23	14.51	19.37				6/30/10	11.91
Net of Fee Return	4.09	11.23	14.51	19.37				6/30/10	11.91
Barclays High Yield	3.29	7.97	9.95	15.81				6/30/10	12.39



PA Public School Employees' Retirement Sys
Fund Return Table
Quarter Ended 12/31/12

Manager	1 Quarter	2 Quarters	3 Quarters	1 Year	3 Years	5 Years	Since 12/31/02	Inception Date	Inception Return
Sankaty Credit Opp. Fund V-A									
Gross of Fee Return	-0.64							9/30/12	-0.64
Net of Fee Return	-0.64							9/30/12	-0.64
Barclays High Yield	3.29							9/30/12	3.29
High Yield Fixed Income Composite									
Gross of Fee Return	2.71	9.18	11.08	17.73	11.73	8.31	10.27	9/30/99	8.30
Net of Fee Return	2.67	9.12	10.95	17.57	11.48	8.11	9.96	9/30/99	7.97
Barclays High Yield	3.29	7.97	9.95	15.81	11.86	10.33	10.62	9/30/99	7.86
CS High Yield Index	3.15	7.55	9.23	14.72	11.44	9.52	10.24	9/30/99	8.08
Blended Policy (HY & Opp)	3.29	7.97	9.95	15.81	11.86	10.29	10.63	9/30/99	8.36
Total US FI X TIPS Composite									
Gross of Fee Return	1.99	6.79	9.26	13.41	10.68	8.55	7.30	6/30/82	9.42
Net of Fee Return	1.97	6.75	9.17	13.30	10.52	8.40	7.16	6/30/97	7.28
Total Fixed Income x TIPS									
Gross of Fee Return	2.14	7.01						6/30/12	7.01
Net of Fee Return	2.10	6.93						6/30/12	6.93
Total FI x TIPS x Pimco Multi-Sector									
Gross of Fee Return	2.13	7.13						6/30/12	7.13
Net of Fee Return	2.08	7.04						6/30/12	7.04

*Please note the PSERS U.S. Long Treasuries Fund has a 4Q2012 levered return of (11.67) and an unlevered return of (0.68). All respective composites are incorporating the levered return.



PA Public School Employees' Retirement Sys
 Fund Return Table
 Quarter Ended 12/31/12

Manager	1 Quarter	2 Quarters	3 Quarters	1 Year	3 Years	5 Years	Since 12/31/02	Inception Date	Inception Return
PSERS Total TIPS (levered)									
Gross of Fee Return	0.85	2.95	6.06	7.10	12.13	10.05		3/31/04	7.83
Net of Fee Return	0.85	2.95	6.06	7.10	12.13	10.05		3/31/04	7.83
Barclays U.S. TIPS Index	0.69	2.82	6.07	6.98	8.90	7.04		3/31/04	6.04
US TIPS Composite									
Gross of Fee Return	0.85	2.95	6.06	7.10	12.13	10.05		3/31/04	7.80
Net of Fee Return	0.85	2.95	6.06	7.10	12.13	10.05		3/31/04	7.78
Barclays U.S. TIPS Index	0.69	2.82	6.07	6.98	8.90	7.04		3/31/04	6.04
Black River Inflation Opp. Fund									
Gross of Fee Return	7.22							9/30/12	7.22
Net of Fee Return	7.22							9/30/12	7.22
LIBOR 3 MONTH	0.08							9/30/12	0.08
Bridgewater TIPS									
Gross of Fee Return	2.21	7.57	10.07	11.17	23.22	19.29		6/30/04	14.16
Net of Fee Return	1.94	7.03	9.23	10.04	21.90	18.17		6/30/04	13.42
BGI Custom IL Bond Index	2.10	5.33	6.81	8.80	7.90	6.95		6/30/04	6.57



PA Public School Employees' Retirement Sys
Fund Return Table
Quarter Ended 12/31/12

Manager	1 Quarter	2 Quarters	3 Quarters	1 Year	3 Years	5 Years	Since 12/31/02	Inception Date	Inception Return
TIPS Composite									
Gross of Fee Return	1.71	5.27	8.08	9.15	16.80	13.71		3/31/04	9.99
Net of Fee Return	1.57	4.99	7.66	8.59	16.23	13.25		3/31/04	9.70
Barclays U.S. TIPS Index	0.69	2.82	6.07	6.98	8.90	7.04		3/31/04	6.04
Total US Fixed Income Composite									
Gross of Fee Return	1.89	6.23	8.79	11.79	12.58	10.09	8.12	6/30/82	9.69
Net of Fee Return	1.82	6.10	8.58	11.51	12.29	9.85	7.94	6/30/97	7.78
Barclays Universal	0.58	2.59	4.64	5.53	6.69	6.19	5.59	6/30/97	6.32
Barclays Aggregate Index	0.21	1.80	3.90	4.22	6.19	5.95	5.18	6/30/97	6.19
Blended Policy (Total US FI)	1.49	4.37	6.79	9.28	9.40	9.48	6.97	6/30/97	7.35
PIMCO Multi-Sector Strategy									
Gross of Fee Return	2.28	6.04						6/30/12	6.04
Net of Fee Return	2.28	6.04						6/30/12	6.04
Blended Policy Index	1.81	4.98						6/30/12	4.98
Total Fixed Income Composite									
Gross of Fee Return	2.02	6.50	8.75	12.12	12.12	9.88	8.11	6/30/91	7.91
Net of Fee Return	1.95	6.36	8.54	11.83	11.81	9.63	7.92	6/30/97	7.54
Blended Policy (Total FI)	1.58	4.83	6.64	9.69	9.07	9.15	7.00	6/30/97	7.21

* Please note the PSERS U.S. Long Treasuries Fund has a 4Q2012 levered return of (11.67) and an unlevered return of (0.68). All respective composites are incorporating the levered return.

* The PIMCO Multi-Sector Strategy Fund policy is as follows: 26% Barclays U.S. Agg. Bond, 16% Barclays U.S. Treasury Long, 5% Barclays Global Agg GDP-weighted Dev. Mkt ex-U.S. (Unhedged), 49% Barclays U.S. High Yield Bond and 11% Barclays European Market Local Currency. Government Mkt Weighted (Unhedged) 100% Currency Mkt ex-U.S.



PA Public School Employees' Retirement Sys
 Fund Return Table
 Quarter Ended 12/31/12

Manager	1 Quarter	2 Quarters	3 Quarters	1 Year	3 Years	5 Years	Since 12/31/02	Inception Date	Inception Return
Unallocated Cash & Cash Equivalents									
Gross of Fee Return	0.24	0.42	2.28	3.91	2.47	-0.39	0.64	6/30/98	0.34
Net of Fee Return	0.21	0.38	2.25	3.84	2.45	-0.40	0.63	6/30/98	0.34
ML US T-Bill 0-3 Months Index	0.02	0.05	0.06	0.07	0.09	0.43	1.69	6/30/98	2.47
Security Capital - Preferred Growth									
Gross of Fee Return	1.88	2.83	5.79	13.75	14.10			6/30/08	7.44
Net of Fee Return	1.88	2.83	5.79	13.75	14.10			6/30/08	7.44
Wilshire Real Est. Secs Index	2.47	2.35	5.97	17.55	18.11			6/30/08	6.47
PTRES Composite									
Gross of Fee Return	1.88	2.83	5.79	13.75	11.86	0.84	12.03	9/30/95	11.71
Net of Fee Return	1.88	2.83	5.79	13.75	11.64	0.46	11.67	6/30/97	9.63
FTSE EPRA/NAREIT Developed RE	5.77	11.59	13.95	28.65	13.41	1.06	12.08	6/30/97	7.55
FTSE EPRA/NAREIT Developed X-US	9.50	21.60	22.15	40.95	10.07	-1.81	12.54	6/30/97	6.73
FTSE EPRA/NAREIT Global RE Index	6.33	12.78	14.46	29.87	12.71	-0.06			
Wilshire Real Est. Secs Index	2.47	2.35	5.97	17.55	18.11	5.08	11.65	6/30/97	9.38
Blended Policy (PTRES)	6.33	12.78	14.46	29.87	12.71	0.84	11.05	6/30/97	9.06
Credit Suisse									
Gross of Fee Return	-6.02	3.69	-0.92	0.20	0.55	-4.84		12/31/06	-0.87
Net of Fee Return	-6.02	3.65	-1.02	0.06	0.38	-5.01		12/31/06	-1.04
DJ UBS Commodity Index	-6.33	2.75	-1.92	-1.05	0.07	-5.17		12/31/06	-1.90



PA Public School Employees' Retirement Sys
 Fund Return Table
 Quarter Ended 12/31/12

Manager	1 Quarter	2 Quarters	3 Quarters	1 Year	3 Years	5 Years	Since 12/31/02	Inception Date	Inception Return
DB Advisors									
Gross of Fee Return	-1.28	7.17	-0.61	2.76	1.36	-5.38		6/30/07	-2.93
Net of Fee Return	-1.49	6.71	-1.28	1.86	0.46	-6.28		6/30/07	-3.77
Blended Benchmark (DBA)	-2.43	6.43	-0.78	3.14	2.41	-3.22		6/30/07	-1.18
Gresham									
Gross of Fee Return	-4.26	5.21	-1.34	2.25	5.48	-1.44		9/30/07	-0.50
Net of Fee Return	-4.34	5.06	-2.68	0.86	4.60	-2.03		9/30/07	-1.07
DJ UBS Commodity Index	-6.33	2.75	-1.92	-1.05	0.07	-5.17		9/30/07	-4.10
PSERS Gold Fund									
Gross of Fee Return	-5.70	4.17						6/30/12	4.17
Net of Fee Return	-5.70	4.17						6/30/12	4.17
Schroders Investment Management									
Gross of Fee Return	-5.82	3.99	-2.65	0.65	3.68	-0.43		9/30/07	1.54
Net of Fee Return	-6.00	3.61	-3.21	-0.11	2.90	-1.16		9/30/07	0.83
DJ UBS Commodity Index	-6.33	2.75	-1.92	-1.05	0.07	-5.17		9/30/07	-4.10
Wellington Management Company									
Gross of Fee Return	-2.67	6.38	-1.72	3.86	4.09	-1.66		12/31/06	3.30
Net of Fee Return	-2.89	5.91	-2.40	2.92	3.07	-2.64		12/31/06	2.37
Blended Benchmark (WMC)	-2.53	6.69	-1.24	4.37					
Commodities Composite									
Gross of Fee Return	-4.99	6.05	-0.38	3.34	3.69	-2.74		12/31/06	1.91
Net of Fee Return	-5.13	5.73	-1.10	2.46	2.89	-3.48		12/31/06	1.22
DJ UBS Commodity Index	-6.33	2.75	-1.92	-1.05	0.07	-5.17		12/31/06	-1.90

* Please note the PSERS Gold Fund has a 4Q2012 levered return of (80.90) and an unlevered return of (5.70). All respective composites are incorporating the levered return.



PA Public School Employees' Retirement Sys
 Fund Return Table
 Quarter Ended 12/31/12

Manager	1 Quarter	2 Quarters	3 Quarters	1 Year	3 Years	5 Years	Since 12/31/02	Inception Date	Inception Return
Aeolus Property Catastrophe									
Gross of Fee Return	-0.62	11.14						6/30/12	11.14
Net of Fee Return	-0.62	11.14						6/30/12	11.14
AQR Capital Offshore Multi-Strategy									
Gross of Fee Return	3.40	0.72	2.65	4.82	7.29	3.45		12/31/05	-0.08
Net of Fee Return	3.40	0.72	2.65	4.82	7.29	3.45		12/31/05	-0.08
1 Month LIBOR Rate	0.05	0.11	0.17	0.23	0.25	0.72		12/31/05	1.97
BlackRock Capital Structure									
Gross of Fee Return	4.32	4.23	5.32	4.07	8.85			6/30/09	7.29
Net of Fee Return	4.32	4.23	5.32	4.07	8.85			6/30/09	7.29
1 Month LIBOR Rate	0.05	0.11	0.17	0.23	0.25			6/30/09	0.25
BlackRock Global Ascent									
Gross of Fee Return	-1.05	1.95	-5.20	1.06	1.61	2.17		12/31/05	5.10
Net of Fee Return	-1.05	1.90	-5.25	1.01	1.59	2.16		12/31/05	5.09
Citigroup 3 Month T-Bill Index	0.02	0.05	0.06	0.07	0.09	0.45		12/31/05	1.66
Black River Fixed Income Rel Val									
Gross of Fee Return	1.77	3.24	3.74	6.70				12/31/11	6.70
Net of Fee Return	1.77	3.24	3.74	6.70				12/31/11	6.70
BlueTrend Fund Limited									
Gross of Fee Return	-2.14	3.91						6/30/12	3.91
Net of Fee Return	-2.26	3.78						6/30/12	3.78
Boston Co. Microcap Fund (Terminated)									
Gross of Fee Return									
Net of Fee Return									
91-Day Treasury Bill Index									



PA Public School Employees' Retirement Sys
 Fund Return Table
 Quarter Ended 12/31/12

Manager	1 Quarter	2 Quarters	3 Quarters	1 Year	3 Years	5 Years	Since 12/31/02	Inception Date	Inception Return
Brevan Howard Fund Limited									
Gross of Fee Return	2.36	8.01	3.47	4.35				6/30/10	6.56
Net of Fee Return	2.36	8.01	3.47	4.35				6/30/10	6.55
LIBOR 3 MONTH	0.08	0.20	0.31	0.45				6/30/10	0.38
Bridgewater Pure Alpha									
Gross of Fee Return	-0.11	5.47	2.67	1.56	28.31	19.86		12/31/05	16.68
Net of Fee Return	-0.11	5.47	2.67	1.56	28.31	19.86		12/31/05	16.68
LIBOR 3 MONTH	0.08	0.20	0.31	0.45	0.37	0.98		12/31/05	2.17
Brigade Leveraged Capital									
Gross of Fee Return	1.76	3.26	4.27	7.05	5.90	6.72		9/30/07	6.67
Net of Fee Return	1.76	3.26	4.27	7.05	5.91	6.72		9/30/07	6.67
1 Month LIBOR Rate	0.05	0.11	0.17	0.23	0.25	0.72		9/30/07	0.91
Capula Global Relative Value									
Gross of Fee Return	0.41	1.25	1.69	0.83				3/31/11	3.73
Net of Fee Return	0.41	1.25	1.69	0.83				3/31/11	3.73
1 Month LIBOR Rate	0.05	0.11	0.17	0.23				3/31/11	0.23
Capula Tail Risk Fund									
Gross of Fee Return	-2.19	-6.48	-6.08	-14.28				6/30/11	-1.60
Net of Fee Return	-2.19	-6.48	-6.08	-14.28				6/30/11	-1.60
Denali Advisors									
Gross of Fee Return	-4.38	-5.11	-9.11	-9.72	-1.63	-7.80		9/30/05	-2.85
Net of Fee Return	-4.50	-5.35	-10.20	-10.80	-2.31	-8.33		9/30/05	-3.35
LIBOR 3 MONTH	0.08	0.20	0.31	0.45	0.37	0.98		9/30/05	2.25
S&P 500/Citigroup Value Index	1.64	8.04	4.18	17.69	10.47	-0.33		9/30/05	2.99
Blended Benchmark (Denali)	0.08	0.20	0.31	0.45	0.37	-7.36		9/30/05	-2.07



PA Public School Employees' Retirement Sys
 Fund Return Table
 Quarter Ended 12/31/12

Manager	1 Quarter	2 Quarters	3 Quarters	1 Year	3 Years	5 Years	Since 12/31/02	Inception Date	Inception Return
Mariner/Caspian Select Credit									
Gross of Fee Return	2.92	6.31	7.52	11.83				3/31/11	3.61
Net of Fee Return	2.92	6.31	7.52	11.83				3/31/11	3.61
1 Month LIBOR Rate	0.05	0.11	0.17	0.23				3/31/11	0.23
FX Concepts									
Gross of Fee Return	-3.31	-2.08	-4.33	-2.42	-3.52	-2.74		9/30/06	-1.58
Net of Fee Return	-3.70	-2.87	-5.49	-3.97	-4.74	-3.66		9/30/06	-2.55
Lazard Emerging Mkts Income									
Gross of Fee Return	4.29	9.49	5.05	12.61	4.97			9/30/09	6.11
Net of Fee Return	4.29	9.49	5.06	12.61	5.03			9/30/09	6.17
LIBOR 3 MONTH	0.08	0.20	0.31	0.45	0.37			9/30/09	0.36
Nephila/Palmetto Fund									
Gross of Fee Return	3.24	7.90	9.75	10.04				6/30/11	9.00
Net of Fee Return	3.24	7.90	9.75	10.04				6/30/11	9.00
Pareto Active Currency									
Gross of Fee Return	-0.25	-1.44	-0.03	1.22				6/30/10	-5.21
Net of Fee Return	-0.57	-2.06	-0.99	-0.06				6/30/10	-6.14
PIMCO PARS/GCOF/MAV Composite									
Gross of Fee Return	2.05	9.43	13.80	20.44	14.82			3/31/08	15.43
Net of Fee Return	1.25	6.74	9.58	14.21	7.25			3/31/08	10.29
Robeco Transrend Diversified									
Gross of Fee Return	-4.54	-5.44	-2.54	0.91				9/30/11	0.74
Net of Fee Return	-4.54	-5.44	-2.54	0.91				9/30/11	0.74



**PA Public School Employees' Retirement Sys
Fund Return Table
Quarter Ended 12/31/12**

Manager	1 Quarter	2 Quarters	3 Quarters	1 Year	3 Years	5 Years	Since 12/31/02	Inception Date	Inception Return
Total Absolute Return Composite									
Gross of Fee Return	0.75	3.37	2.48	3.98	9.68			3/31/09	10.15
Net of Fee Return	0.62	3.06	2.05	3.44	8.82			3/31/09	9.34
Blended Policy (Abs Ret)	1.82	3.68	5.57	7.50	7.75			3/31/09	7.80
AQR GRP EL 20 Offshore Fund									
Gross of Fee Return									
Net of Fee Return									
Bridgewater All Weather @15									
Gross of Fee Return	2.28							9/30/12	2.28
Net of Fee Return	2.28							9/30/12	2.28
Risk Parity Composite									
Gross of Fee Return	2.00	9.37	14.23	19.34				6/30/11	20.82
Net of Fee Return	2.00	9.37	14.23	19.34				6/30/11	20.82
Blended Policy (Risk Pari.)	1.64	6.39	4.01	9.92				6/30/11	4.16
Atlantic Trust Private Wealth Mgmt.									
Gross of Fee Return	-0.42							9/30/12	-0.42
Net of Fee Return	-0.45							9/30/12	-0.45
S&P MLP Index	-3.30							9/30/12	-3.30

*The Risk Parity Policy is as follows: 35% MSCI ACWI (SNet), 75% Barclays Capital U.S. Treasury Index, 120% Barclays Capital World Inflation Linked Bond Index Hedged, 15% DJ/UBS Commodity Index (Total Return), 5% DJ/UBS Gold Index, -150% 3-Month LIBOR



PA Public School Employees' Retirement Sys
Fund Return Table
 Quarter Ended 12/31/12

Manager	1 Quarter	2 Quarters	3 Quarters	1 Year	3 Years	5 Years	Since 12/31/02	Inception Date	Inception Return
Harvest Funds									
Gross of Fee Return	-0.27	9.53	8.92	13.33	24.08			9/30/08	26.16
Net of Fee Return	-0.47	9.31	8.60	12.80	23.31			9/30/08	25.38
Salient Capital Partners									
Gross of Fee Return	1.33							9/30/12	1.33
Net of Fee Return	1.25							9/30/12	1.25
S&P MLP Index	-3.30							9/30/12	-3.30
MLP Composite									
Gross of Fee Return	0.16	9.42	8.82	13.21	24.04			9/30/08	26.13
Net of Fee Return	0.04	9.29	8.58	12.77	23.30			9/30/08	25.37
S&P MLP Index	-3.30	5.25	2.97	4.78	17.46			9/30/08	21.66
Total Public Market Composite									
Gross of Fee Return	1.48	7.00	4.97	11.37	9.31	1.93	8.49	3/31/92	8.32
Net of Fee Return	1.42	6.85	4.73	11.05	8.96	1.63	8.24	3/31/98	5.67
Blended Policy (Pub Mkt)	1.13	5.72	4.08	9.79	6.93	0.64	7.28	3/31/98	4.81

*The PSERS Total Public Markets Composite is incorporating the levered returns for the PSERS Gold Fund and PSERS U.S. Long Treasuries Fund.

PA Public School Employees' Retirement Sys
Fund Return Table
Quarter Ended 12/31/12

Manager	1 Quarter	2 Quarters	3 Quarters	1 Year	3 Years	5 Years	Since 12/31/02	Inception Date	Inception Return
Private Real Estate Composite									
Blended Policy (Private RE)	2.84	4.59	7.54	9.79	7.97	-10.39	5.90	3/31/81	7.34
	2.26	4.45	6.42	9.48	11.20	2.43	8.43	3/31/81	8.29
Total Real Estate Composite									
Blended Policy (Total RE)	2.81	4.56	7.51	9.94	8.81	-8.70	6.72	3/31/81	7.62
	2.26	4.45	6.42	9.48	11.54	2.54	9.11	3/31/81	8.49
Total Fund Composite Ex. Alt. Inv.									
Blended Policy (TF x AH)	1.65	6.51	5.14	10.89	9.14	0.38	7.84	3/31/81	7.78
	1.33	5.55	4.45	9.76	7.48	0.83	7.40		
Private Equity Composite									
Venture Capital Composite	2.08	2.29	8.39	12.89	13.69	4.18	14.82	3/31/01	11.29
Private Eq/Venture Capital Comp Internally Managed Composite	3.54	5.16	8.17	15.97	8.54	4.21	4.18	3/31/01	1.68
Priv. Eq/Venture Cap/Priv. Debt/Int.	2.22	2.57	8.37	13.20	13.14	4.24	13.62	6/30/98	10.04
	2.48	30.81	30.81					3/31/12	30.81
	2.39	3.02	8.98					3/31/12	8.98
Managed Stock Distribution									
Priv Equity/Venture Cap Total Comp	14.98	11.72	5.65	19.20	-33.00	-21.96	-2.78	6/30/98	-5.86
Venture Econ Index (Lagged)	2.23	2.58	8.37	13.20	13.00	4.16	13.60	6/30/98	9.97
	1.66	1.84	5.06	7.74	8.49	2.84	5.72	6/30/98	3.43
Private Debt Composite									
Private Eq/Venture Cap/Private Debt	3.23	5.13	11.79	13.49	11.54	5.24	12.08	3/31/01	7.75
	2.39	2.99	8.94	13.23	13.01	4.77	13.68	6/30/98	10.28



PA Public School Employees' Retirement Sys
 Fund Return Table
 Quarter Ended 12/31/12

Manager	1 Quarter	2 Quarters	3 Quarters	1 Year	3 Years	5 Years	Since 12/31/02	Inception Date	Inception Return
Total Alternative Investments									
Venture Econ Index (Lagged) - Int	2.40	3.03	8.98	13.27	12.91	4.71	13.68	6/30/98	10.25
Venture Econ Index (Lagged) - VC	-0.02	2.08	2.08	2.18	0.99	-2.89	-2.37		
Venture Econ Index (Lagged) - PE	-0.71	-0.85	1.74	2.18	0.99	-2.89	-2.37		
Venture Econ Index (Lagged) - PE	1.90	2.11	5.39	8.27	9.17	3.35	6.24		
Venture Econ Index(Lagged)-PE/PD/VC	1.66	1.84	5.06	7.74	8.49	2.84	5.72	6/30/98	3.43
Total Private Market Composite									
Blended Policy (Priv Mkt)	2.56	3.59	8.46	12.00	11.59	-0.70	10.98	3/31/81	8.40
	1.88	2.78	5.55	8.36	9.39	2.81	6.72		



PA Public School Employees' Retirement Sys
 Fund Return Table
 Quarter Ended 12/31/12

Manager	1 Quarter	2 Quarters	3 Quarters	1 Year	3 Years	5 Years	Since 12/31/02	Inception Date	Inception Return
PSERS Total Fund									
Gross of Fee Return	1.91	5.95	6.27	11.83	10.31	1.24	8.75	6/30/82	10.30
Net of Fee Return	1.82	5.74	5.95	11.39	9.90	0.90	8.45	6/30/97	6.65
Blended Policy (TF)	1.40	4.73	4.54	9.31	7.65	0.96	7.19		
PSERS Prop Fund									
Gross of Fee Return	0.05	0.13	0.20	0.29	0.28			12/31/08	0.49
Net of Fee Return	0.05	0.13	0.20	0.29	0.28			12/31/08	0.49
ML US T-Bill 0-3 Months	0.02	0.05	0.06	0.07	0.09			12/31/08	0.10
Total Cash (Allocated and Unallocated)									
Gross of Fee Return	0.05	0.13	1.16	2.06	1.44			12/31/08	1.37
Net of Fee Return	0.05	0.13	1.16	2.06	1.44			12/31/08	1.37

*The PSERS Total Fund is incorporating the levered returns for the PSERS Gold Fund and PSERS U.S. Long Treasuries Fund



PA Public School Employees' Retirement Sys
 Fund Return Table
 Quarter Ended 12/31/12

Manager	1 Quarter	2 Quarters	3 Quarters	1 Year	3 Years	5 Years	Since 12/31/02	Inception Date	Inception Return
PSERS Cash Management									
Gross of Fee Return	0.24	0.42	0.50	0.64	0.54	-1.68	-0.02		
Net of Fee Return	0.21	0.39	0.46	0.55	0.51	-1.70	-0.03	6/30/98	-0.11
PSERS Cash Management Sub									
Gross of Fee Return	0.03	0.06	0.12	0.15	0.15			12/31/08	0.25
Net of Fee Return	0.03	0.06	0.12	0.15	0.15			12/31/08	0.25
Unallocated Cash & Cash Equivalents									
Gross of Fee Return	0.24	0.42	2.28	3.91	2.47	-0.39	0.64		
Net of Fee Return	0.21	0.38	2.25	3.84	2.45	-0.40	0.63	6/30/98	0.34
ML US T-Bill 0-3 Months Index	0.02	0.05	0.06	0.07	0.09	0.43	1.69	6/30/98	2.47
PSERS Healthcare - Premium Assist									
Gross of Fee Return	0.12	0.26	0.28	0.79	0.96	1.86	2.70	3/31/92	4.10
Net of Fee Return	0.12	0.26	0.28	0.79	0.96	1.86	2.70	3/31/92	4.10
ML US T-Bill 0-3 Months Index	0.02	0.05	0.06	0.07	0.09	0.43	1.69		
PSERS Healthcare - HOP									
Gross of Fee Return	0.07	0.13	0.22	0.29	0.33	0.94	2.52	12/31/01	2.29
Net of Fee Return	0.07	0.13	0.22	0.29	0.33	0.94	2.52	12/31/01	2.29
PSERS LIBOR									
Gross of Fee Return	0.13	0.32	0.44	0.76	0.81	1.77		12/31/06	2.40
Net of Fee Return	0.13	0.32	0.44	0.76	0.81	1.77		12/31/06	2.40
LIBOR 3 MONTH	0.08	0.20	0.31	0.45	0.37	0.98		12/31/06	1.69

PA Public School Employees' Retirement Sys
Fund Return Table
Quarter Ended 12/31/12

Manager	1 Quarter	2 Quarters	3 Quarters	1 Year	3 Years	5 Years	Since 12/31/02	Inception Date	Inception Return
Mariner/Galton Short Term Dur RMBS									
Gross of Fee Return	0.77	6.82	8.59	9.29				6/30/11	6.44
Net of Fee Return	0.77	6.13	7.73	8.44				6/30/11	5.81
Radcliffe Capital Mgmt.									
Gross of Fee Return	1.17							9/30/12	1.17
Net of Fee Return	1.13							9/30/12	1.13
LIBOR Composite									
Gross of Fee Return	0.31	0.80	1.08	1.45	1.02	1.86		12/31/06	2.47
Net of Fee Return	0.31	0.78	1.05	1.41	1.00	1.84		12/31/06	2.46
LIBOR 3 MONTH	0.08	0.20	0.31	0.45	0.37	0.98		12/31/06	1.69
PSERS TIPS (unlevered)									
Gross of Fee Return	1.03	3.60	7.46	8.55	11.95	9.71		3/31/04	7.64
Net of Fee Return	1.03	3.60	7.46	8.55	11.95	9.71		3/31/04	7.64
PSERS TIPS (cash)									
Gross of Fee Return	0.21	0.44	0.63	1.02	0.93			3/31/09	1.63
Net of Fee Return	0.21	0.44	0.63	1.02	0.93			3/31/09	1.63
PSERS Total TIPS (unlevered)									
Gross of Fee Return	0.85	2.95	6.08	7.03	9.33	7.61		3/31/04	6.46
Net of Fee Return	0.85	2.95	6.08	7.03	9.33	7.61		3/31/04	6.46
PSERS Total TIPS (levered)									
Gross of Fee Return	0.85	2.95	6.06	7.10	12.13	10.05		3/31/04	7.83
Net of Fee Return	0.85	2.95	6.06	7.10	12.13	10.05		3/31/04	7.83
Barclays U.S. TIPS Index	0.69	2.82	6.07	6.98	8.90	7.04		3/31/04	6.04



PA Public School Employees' Retirement Sys
 Fund Return Table
 Quarter Ended 12/31/12

Manager	1 Quarter	2 Quarters	3 Quarters	1 Year	3 Years	5 Years	Since 12/31/02	Inception Date	Inception Return
PIMCO PARS									
Gross of Fee Return	3.16							9/30/12	3.16
Net of Fee Return	3.16							9/30/12	3.16
PIMCO GCOF									
Gross of Fee Return	2.31							9/30/12	2.31
Net of Fee Return	2.31							9/30/12	2.31
PIMCO MAV									
Gross of Fee Return	0.66	0.66						6/30/12	0.66
Net of Fee Return	0.66	0.66						6/30/12	0.66
PIMCO PARS/GCOF/MAV Composite									
Gross of Fee Return	2.05	9.43	13.80	20.44	14.82			3/31/08	15.43
Net of Fee Return	1.25	6.74	9.58	14.21	7.25			3/31/08	10.29

*The PIMCO PARS/GCOF/MAV Composite is incorporating an aggregate performance fee accrual. This fee cannot be allocated to each individual account.

*The difference between the sum of the three underlying funds market values and the composite market value is the fee accrual.



PA Public School Employees' Retirement Sys
 Fund Return Table
 Quarter Ended 12/31/12

Manager	1 Quarter	2 Quarters	3 Quarters	1 Year	3 Years	5 Years	Since 12/31/02	Inception Date	Inception Return
AH Lisanti									
Gross of Fee Return	-3.06	1.10	-0.74	14.75	14.61			9/30/08	11.49
Net of Fee Return	-3.19	0.87	-1.06	14.28	14.16			9/30/08	11.06
MSCI USA Small Cap Growth	1.76	7.38	1.72	16.35	13.78			9/30/08	10.29
Russell 2000 Growth	0.45	5.31	1.16	14.59	12.81			9/30/08	8.26
Blended Benchmark (AH Lisanti)	1.76	7.38	1.72	16.35	12.92			9/30/08	8.33
Conestoga Capital Advisors									
Gross of Fee Return	1.17	2.60	2.50	12.69	14.54	7.17		12/31/04	7.47
Net of Fee Return	1.04	2.37	2.16	12.20	14.06	6.71		12/31/04	7.02
MSCI USA Small Cap Index	2.59	8.14	3.62	17.52	13.11	5.13		12/31/04	5.17
Russell 2000	1.85	7.19	3.47	16.34	12.25	3.55		12/31/04	4.76
Blended Benchmark (Conestoga)	2.59	8.14	3.62	17.52	12.67	3.79		12/31/04	4.91
Hellman Jordan Mgmt									
Gross of Fee Return	0.90	8.12	3.48	18.66	10.18			6/30/09	15.23
Net of Fee Return	0.75	7.88	3.15	18.19	9.70			6/30/09	14.76
S&P 500/Citigroup Growth Index	-2.04	4.24	2.10	14.62	11.33			6/30/09	16.15
Opus Capital Management									
Gross of Fee Return	3.96	9.47	2.34	12.35	12.46	5.20		12/31/04	5.08
Net of Fee Return	3.87	9.30	2.10	11.95	12.02	4.73		12/31/04	4.56
MSCI USA Small Cap Value	3.42	8.90	5.48	18.67	12.33	5.49		12/31/04	5.51
Russell 2000 Value	3.23	9.07	5.79	18.05	11.58	3.54		12/31/04	4.18
Blended Benchmark (Opus)	3.42	8.90	5.48	18.67	12.32	3.96		12/31/04	4.44

PA Public School Employees' Retirement Sys
 Fund Return Table
 Quarter Ended 12/31/12

Manager	1 Quarter	2 Quarters	3 Quarters	1 Year	3 Years	5 Years	Since 12/31/02	Inception Date	Inception Return
E/M US Equity Composite									
Gross of Fee Return	0.76	4.99	1.78	10.74	11.12	3.26	8.65	12/31/99	3.57
Net of Fee Return	0.64	4.77	1.47	10.26	10.63	2.81	8.19	12/31/99	3.14
Blended Policy (E/M US Eq)	1.60	7.25	6.23	16.70	12.65	3.39	8.38	12/31/99	4.15
John Hsu Capital									
Gross of Fee Return	6.41	12.05	1.49	15.99	4.20	-1.41	12.16	3/31/98	6.64
Net of Fee Return	6.31	11.84	1.20	15.55	3.80	-1.79	11.72	3/31/98	6.20
MSCI World Index (N)	2.49	9.36	3.82	15.82	6.93	-1.18	7.51	3/31/98	3.33
Shah Capital Management									
Gross of Fee Return	16.25	13.13	-7.21	2.90	-13.40	-1.41		6/30/06	2.45
Net of Fee Return	16.25	13.13	-7.21	2.90	-13.40	-1.44		6/30/06	2.33
MSCI World (N)	2.49	9.36	3.82	15.82	6.93	-1.18		6/30/06	2.35
1 Mo LIBOR (lag)	0.05	0.11	0.17	0.23	0.25	0.79			
Blended Benchmark (Shah)	1.27	4.70	2.08	8.01	3.98	-0.55		6/30/06	2.86
Glovista									
Gross of Fee Return	7.81	14.20	4.99	20.62				9/30/11	21.86
Net of Fee Return	7.68	14.06	4.79	20.34				9/30/11	21.63
MSCI EM Index (N)	5.58	13.75	3.63	18.22				9/30/11	18.36
E/M Non-US Equity Composite									
Gross of Fee Return	9.11	12.69	-0.39	12.96	0.80	0.58	12.64	3/31/98	6.95
Net of Fee Return	9.02	12.55	-0.59	12.67	0.45	0.25	12.24	3/31/98	6.53
Blended Policy (E/M Non-US)	2.90	9.12	3.58	10.77	3.93	-1.31	7.44		



PA Public School Employees' Retirement Sys
 Fund Return Table
 Quarter Ended 12/31/12

Manager	1 Quarter	2 Quarters	3 Quarters	1 Year	3 Years	5 Years	Since 12/31/02	Inception Date	Inception Return
Piedmont Inv. Advisors									
Gross of Fee Return	0.41	2.80	5.13	6.33	7.38	6.84		12/31/04	5.95
Net of Fee Return	0.34	2.67	4.93	6.07	7.13	6.59		12/31/04	5.70
Barclays Aggregate Index	0.21	1.80	3.90	4.22	6.19	5.95		12/31/04	5.43
Pugh Capital Management									
Gross of Fee Return	0.49	2.45	4.55	5.72	7.14	7.19		6/30/06	7.42
Net of Fee Return	0.45	2.35	4.41	5.52	6.92	6.97		6/30/06	7.19
Barclays Aggregate Index	0.21	1.80	3.90	4.22	6.19	5.95		6/30/06	6.44
E/M US Core Plus FI Composite									
Gross of Fee Return	0.46	2.58	4.76	5.94	5.04	-0.34		12/31/04	1.48
Net of Fee Return	0.41	2.47	4.60	5.72	4.83	-0.52		12/31/04	1.28
Blended Policy (E/M US FI)	0.21	1.80	3.90	4.22	5.71	4.73		12/31/04	4.67
Denali Advisors									
Gross of Fee Return	-4.38	-5.11	-9.11	-9.72	-1.63	-7.80		9/30/05	-2.85
Net of Fee Return	-4.50	-5.35	-10.20	-10.80	-2.31	-8.33		9/30/05	-3.35
LIBOR 3 MONTH	0.08	0.20	0.31	0.45	0.37	0.98		9/30/05	2.25
S&P 500/Citigroup Value Index	1.64	8.04	4.18	17.69	10.47	-0.33		9/30/05	2.99
Blended Benchmark (Denali)	0.08	0.20	0.31	0.45	0.37	-7.36		9/30/05	-2.07
E/M Absolute Return Composite									
Gross of Fee Return	-4.38	-5.11	-9.11	-9.72	-0.64			9/30/08	3.99
Net of Fee Return	-4.50	-5.35	-10.20	-10.80	-1.32			9/30/08	3.35
Blended Policy (E/M Abs Ret)	0.09	0.20	0.32	0.45	4.35			9/30/08	8.37



PA Public School Employees' Retirement Sys
 Fund Return Table
 Quarter Ended 12/31/12

Manager	1 Quarter	2 Quarters	3 Quarters	1 Year	3 Years	5 Years	Since 12/31/02	Inception Date	Inception Return
E/M Total Program Composite									
Gross of Fee Return	2.45	5.58	1.21	8.79	6.40	0.62	7.88		
Net of Fee Return	2.36	5.41	0.91	8.37	5.98	0.24	7.47	3/31/95	7.48
Emerging Mgr Bnchmk	1.44	5.78	4.33	12.81	8.86	1.87	7.77	3/31/95	8.16



PA Public School Employees' Retirement Sys
 Fund Return Table
 Quarter Ended 12/31/12

Manager	1 Quarter	2 Quarters	3 Quarters	1 Year	3 Years	5 Years	Since 12/31/04	Inception Date	Inception Return
PSERS Total Fund									
Gross of Fee Return	1.91	5.95	6.27	11.83	10.31	1.24	6.08	6/30/82	10.30
Net of Fee Return	1.82	5.74	5.95	11.39	9.90	0.90	5.77	6/30/97	6.65
Blended Policy (TF)	1.40	4.73	4.54	9.31	7.65	0.96	4.83		

*The PSERS Total Fund is incorporating the levered returns for the PSERS Gold Fund and PSERS U.S. Long Treasuries Fund.